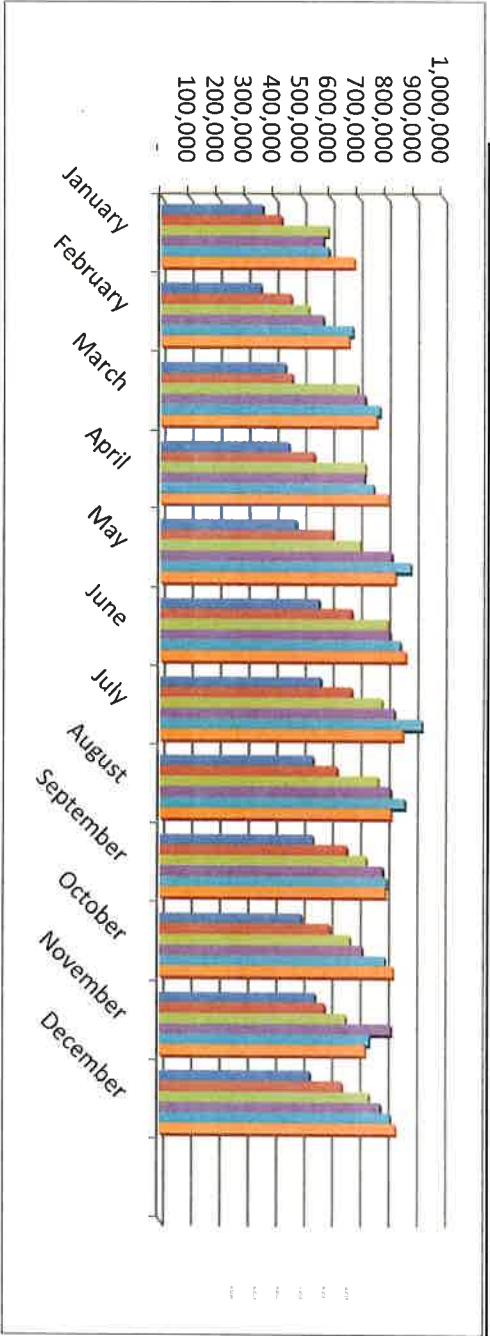


Fremont County, Colorado Retail Sales Tax Collections Through January 2025

	2020	2021	2022	2023	2024	2025	2024-2025	2025 Budget
January	425,752	592,912	575,926	595,851	685,214	650,653	\$ (34,561)	\$ 700,000
February	460,433	523,766	575,755	680,384	666,381	-	-	-
March	465,333	697,671	725,037	777,369	764,911	-	-	-
April	544,964	726,329	723,082	755,788	805,574	-	-	-
May	612,024	708,272	820,761	887,733	831,828	-	-	-
June	679,003	805,587	814,247	850,988	868,820	-	-	-
July	679,285	785,756	830,627	928,185	859,789	-	-	-
August	627,461	773,004	817,316	868,079	818,467	-	-	-
September	663,155	732,232	791,189	803,102	799,535	-	-	-
October	602,323	674,999	718,310	799,144	827,490	-	-	-
November	585,502	660,429	820,668	743,896	727,899	-	-	-
December	646,571	743,154	783,361	817,997	836,085	-	-	-
	6,991,805	8,424,110	8,996,279	9,508,516	9,491,993	650,653	(34,561)	\$ (49,347)

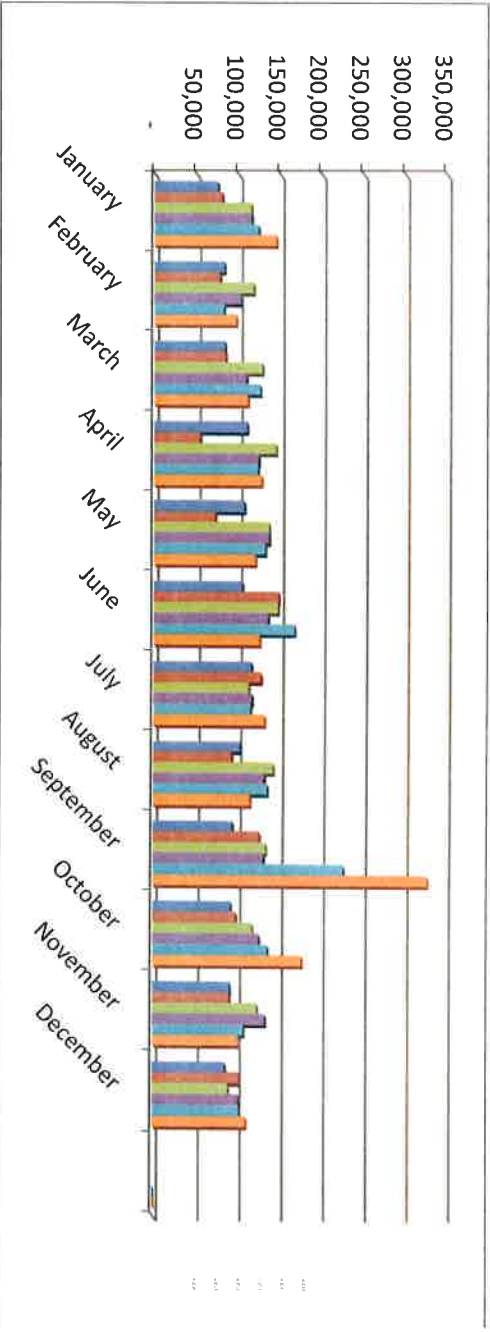


Fremont County, Colorado

Auto Use Tax Collections

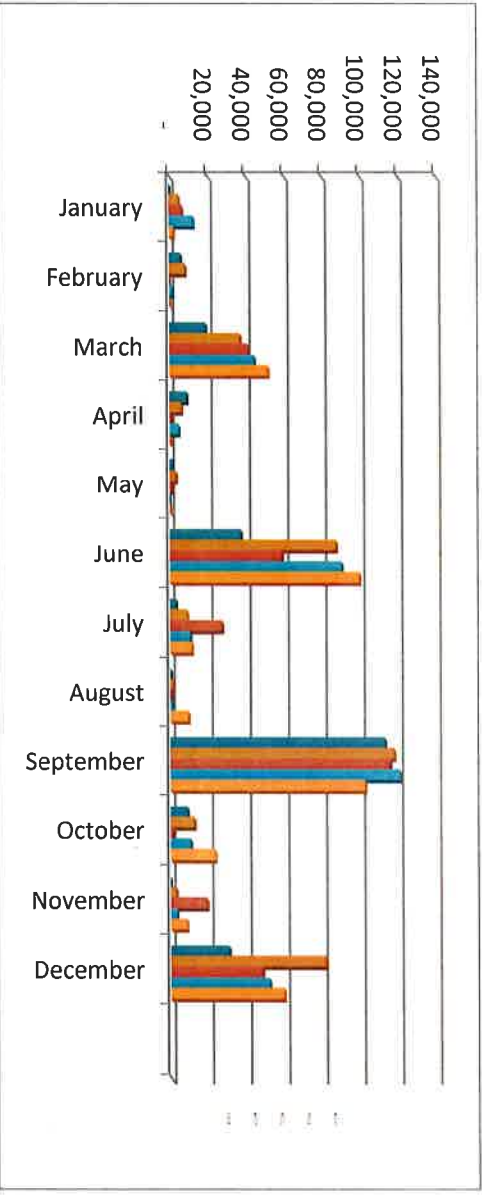
Through February 2025

	2020	2021	2022	2023	2024	2025	2024-2025	2025 Budget
January	80,944	115,407	116,103	124,250	145,404	110,659	(34,745)	
February	78,006	118,570	103,075	82,933	97,339	101,895	4,556	\$ 212,500
March	84,954	128,777	109,872	126,405	111,418	-	-	
April	54,640	145,252	124,591	124,051	127,941	-	-	
May	73,072	137,408	137,364	132,664	120,930	-	-	
June	149,045	148,120	136,504	168,397	126,208	-	-	
July	127,927	113,466	117,423	115,709	132,364	-	-	
August	93,200	142,678	132,254	136,110	115,219	-	-	
September	126,580	134,254	131,773	227,497	327,656	-	-	
October	99,204	118,464	126,711	136,917	177,795	-	-	
November	91,596	124,358	134,094	108,353	102,048	-	-	
December	103,009	90,256	102,404	103,475	110,985	-	-	
	1,162,178	1,517,011	1,472,169	1,586,761	1,695,307	212,554	(30,189)	54



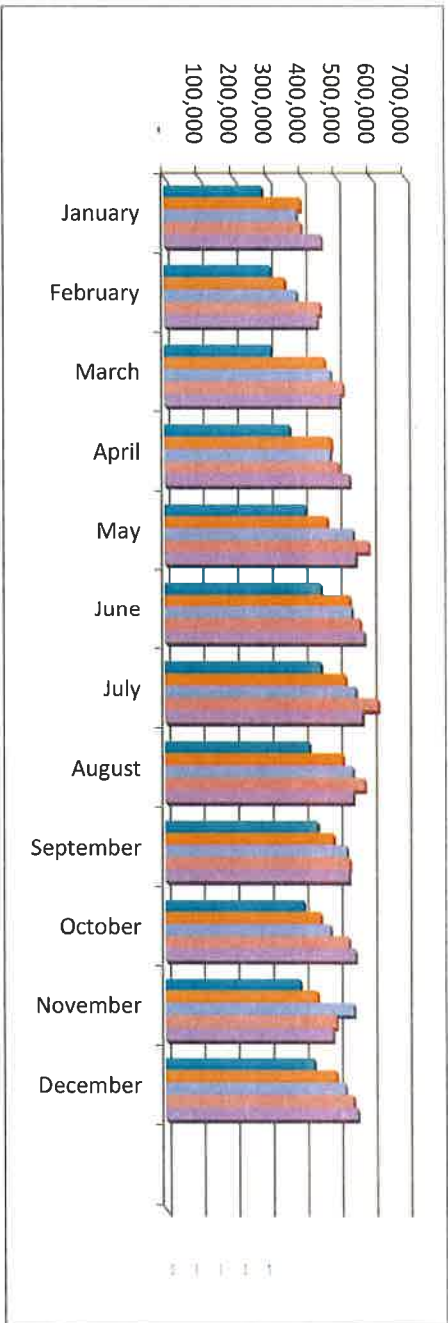
Fremont County, Colorado Lodging Tax Through January 2025

	2020	2021	2022	2023	2024	2025	2024-2025	2025 Budget
January	147	4,993	6,620	12,632	2,264	1,420	(844)	\$ 28,333
February	6,051	8,236	90	1,901	105	-	-	
March	18,932	36,936	41,145	44,471	51,596	-	-	
April	9,088	6,144	829	4,787	275	-	-	
May	1,768	3,300	815	-	196	-	-	
June	37,337	87,331	58,746	90,403	99,811	-	-	
July	3,285	8,908	27,259	10,609	11,494	-	-	
August	248	1,377	611	1,015	9,599	-	-	
September	112,962	117,748	115,392	120,631	102,467	-	-	
October	9,049	12,435	1,277	10,681	23,448	-	-	
November	-	2,762	19,005	3,230	8,530	-	-	
December	30,683	81,518	48,200	51,965	59,564	-	-	
Total	229,551	371,687	319,988	352,325	369,349	\$ 1,420	\$ (844)	(26,913)



Fremont County, Colorado
Sheriff - Retail Sales Tax Collections
Through January 2025

	2020	2021	2022	2023	2024	2025	2023-2024	2025 Budget
January	283,835	395,275	383,951	397,234	456,809	433,768	(23,041)	495,833
February	306,955	349,178	383,837	453,590	444,254	-	-	-
March	310,222	465,114	483,358	518,246	509,941	-	-	-
April	363,309	484,219	482,055	503,852	537,049	-	-	-
May	408,016	472,181	547,174	591,822	554,552	-	-	-
June	452,669	537,066	542,831	567,325	579,213	-	-	-
July	452,856	523,837	553,751	618,790	573,193	-	-	-
August	418,307	515,336	544,877	578,719	545,644	-	-	-
September	442,103	488,155	527,459	535,402	533,023	-	-	-
October	401,548	449,999	478,873	532,762	551,660	-	-	-
November	390,335	440,286	547,112	495,931	485,266	-	-	-
December	431,047	495,436	522,241	545,332	557,390	-	-	-
	4,661,203	5,616,081	5,997,520	6,339,005	6,327,994	433,768	(23,041)	(62,065)



Fremont County, Colorado Sheriff - Auto Use Tax Collections Through February 2025

	2020	2021	2022	2023	2024	2025	2024-2025	2024 Budget
January	53,962	76,938	77,402	82,833	96,936	73,772	(23,164)	
February	52,004	79,047	68,717	55,288	64,893	67,930	3,037	\$ 139,167
March	56,636	85,851	97,644	84,270	74,279	-	-	
April	36,427	96,835	83,061	82,701	85,294	-	-	
May	48,715	91,605	91,576	88,443	80,620	-	-	
June	99,363	98,747	91,003	112,265	84,139	-	-	
July	85,285	75,644	78,282	77,140	88,243	-	-	
August	62,133	95,119	88,169	90,740	76,813	-	-	
September	84,387	89,502	87,849	151,665	218,437	-	-	
October	66,136	78,976	84,474	91,278	118,530	-	-	
November	61,066	82,905	89,396	72,236	68,032	-	-	
December	68,673	60,171	68,404	68,984	73,990	-	-	
	774,786	1,011,341	1,005,977	1,057,842	1,130,206	141,702	(20,127)	2,535

