



# Red Creek Quarry

Conditional Use Permit 24-001

Fremont County, Colorado

June 24, 2025



## RED CREEK QUARRY - CUP 24-001





## RED CREEK QUARRY - CUP 24-001

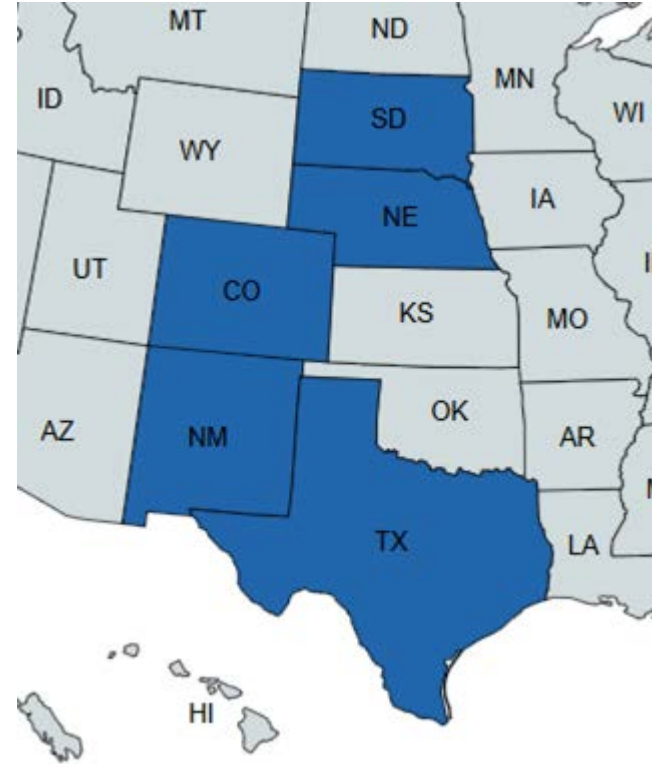


*Photo Courtesy History Center*

**Ideal Cement Company workers line up in 1926 for this group photo. The cement plant broke ground in 1897 and produced its first cement the following year. New plants were built on the site in 1925, 1948 and 1999. Now known as Holcim (US) Inc., the plant manufactures 1.8 million metric tons of cement annually.**

## RED CREEK QUARRY - CUP 24-001

- Fremont County made cement builds the future
  - Cement used in projects in CO, NE, NM, SD, TX
- Fremont County Tax Revenue
  - \$19.4 million paid in property taxes (2014-24)
  - RCQ would also bring 2 years of construction jobs

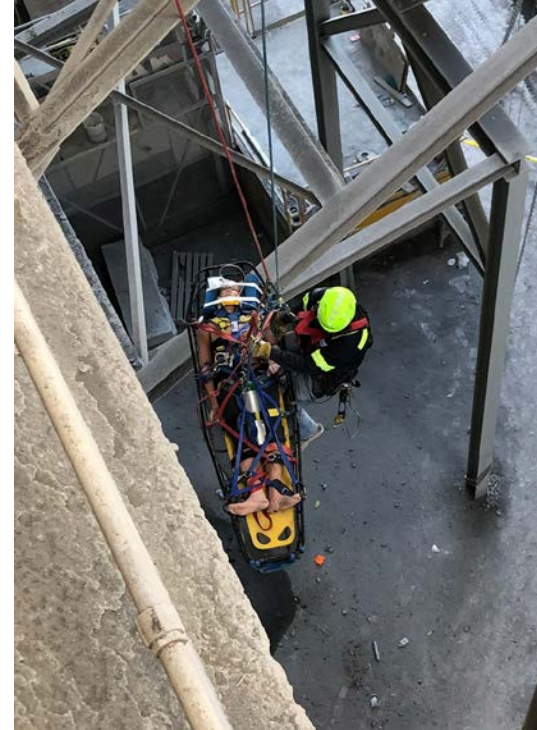


## RED CREEK QUARRY - CUP 24-001

- Cement production capacity 1.8M tons
- Waste tire derived fuel
  - >3 million used tires consumed per year
  - >1,500 collected annually at the plant
- Bear Creek Quarry is approaching the end of its life
- Red Creek Quarry will sustain operations going forward

## RED CREEK QUARRY - CUP 24-001

- Safety is our top priority.
- >1.7 million hours without a Lost Time Injury
- Amrize Emergency Response Team (ERT)
  - 25 member team provides 24/7 Emergency Medical Responder coverage.
  - 11 are Confined Space Rescue Certified, the only such team in Southern Colorado.
  - 2 are volunteer first responders in Fremont County



## RED CREEK QUARRY - CUP 24-001



- Total plant employment - 187
  - 75% live in Fremont County
- \$150 million invested in plant workforce (2014-24)
- Multiple generations of families are employed at the plant
- 2025 Job Fairs: 1 completed, 2 planned



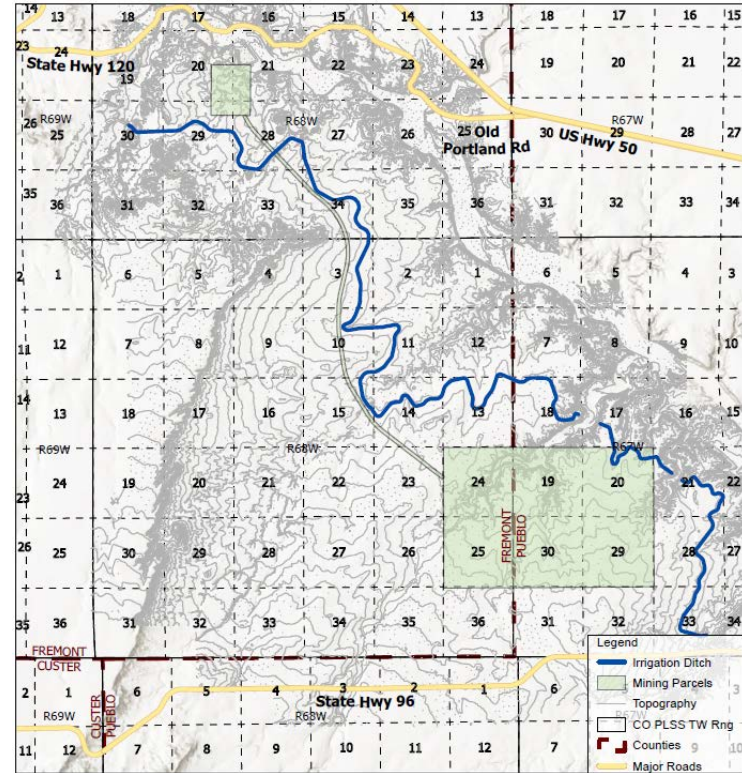
## RED CREEK QUARRY - CUP 24-001





## RED CREEK QUARRY - CUP 24-001

- Limestone and sandstone source for next 100 years
- 6 land sections for quarry
  - 2 in Fremont County
  - 4 in Pueblo County

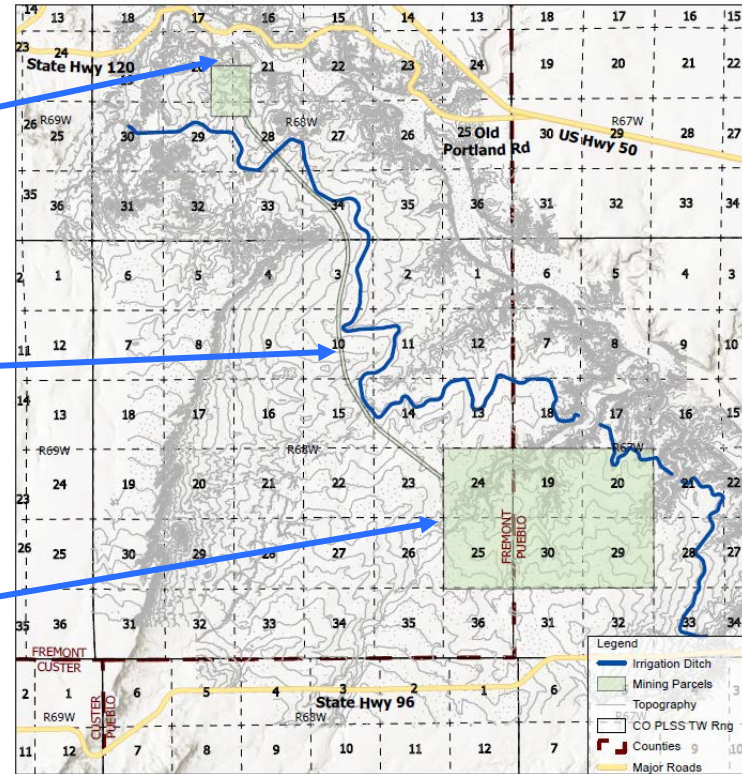


## RED CREEK QUARRY - CUP 24-001

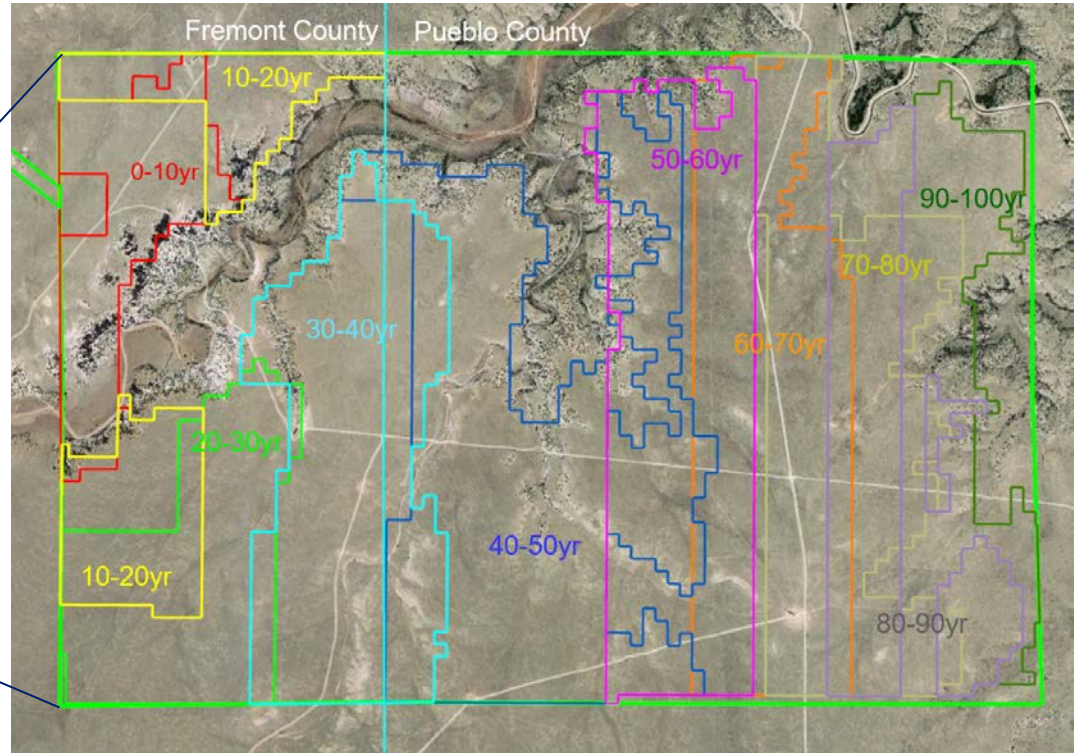
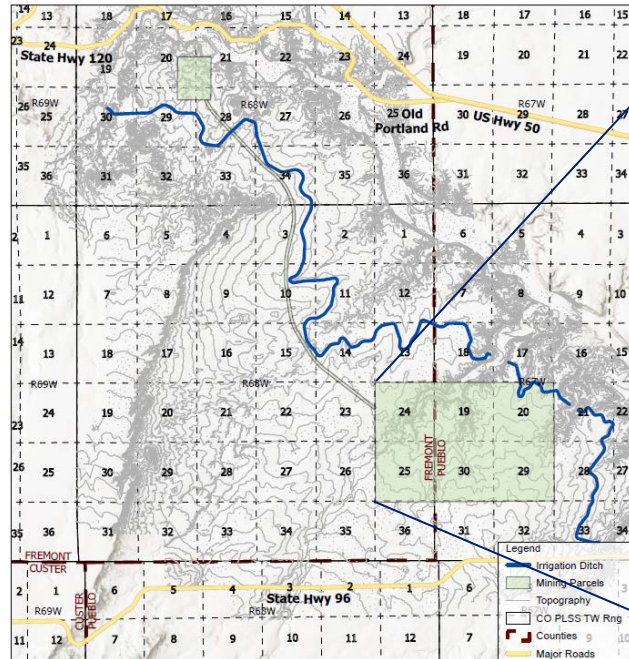
Beaver Creek Quarry  
& Portland Plant

Material Transport  
and Access Corridor  
(MTAC)

Red Creek  
Quarry

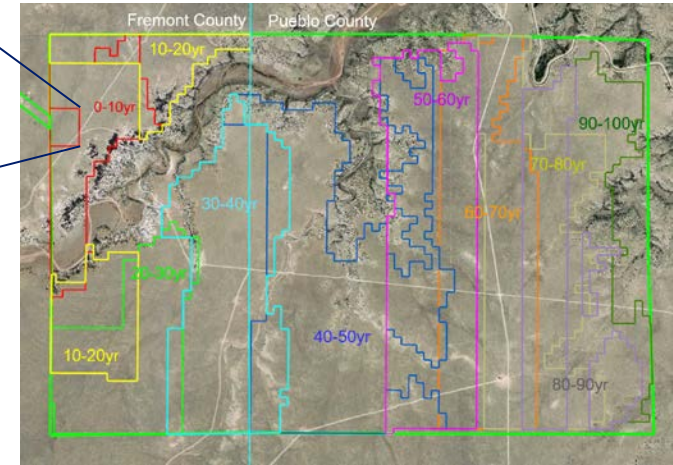


# RED CREEK QUARRY - CUP 24-001





## 12



## Material Transport Access Corridor (MTAC)

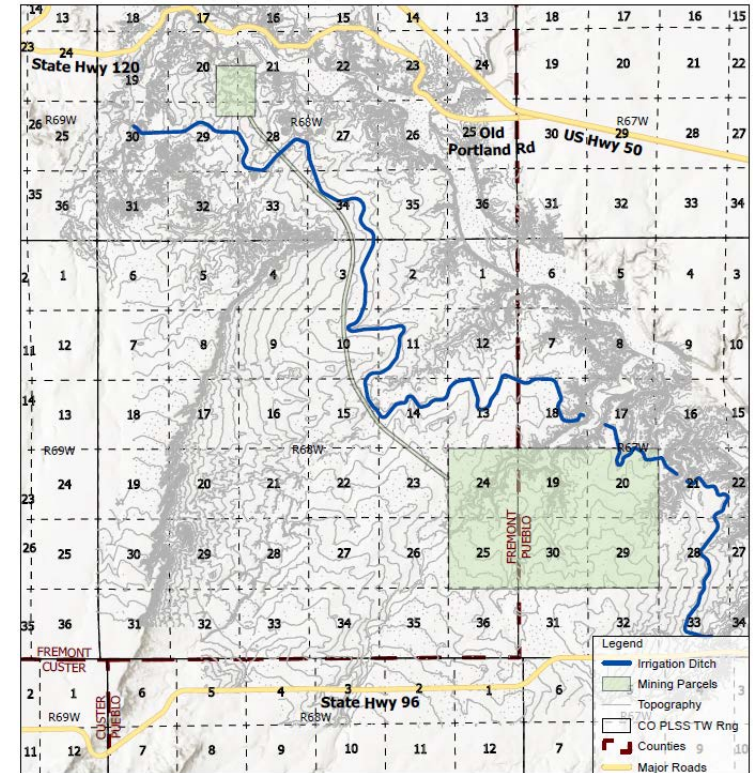
- 6.3 mile conveyor belt
- Enclosed 6' high chain link fence
- 40' wide roadway
- 13 wildlife crossings



# RED CREEK QUARRY - CUP 24-001

## ● State of Colorado Permits

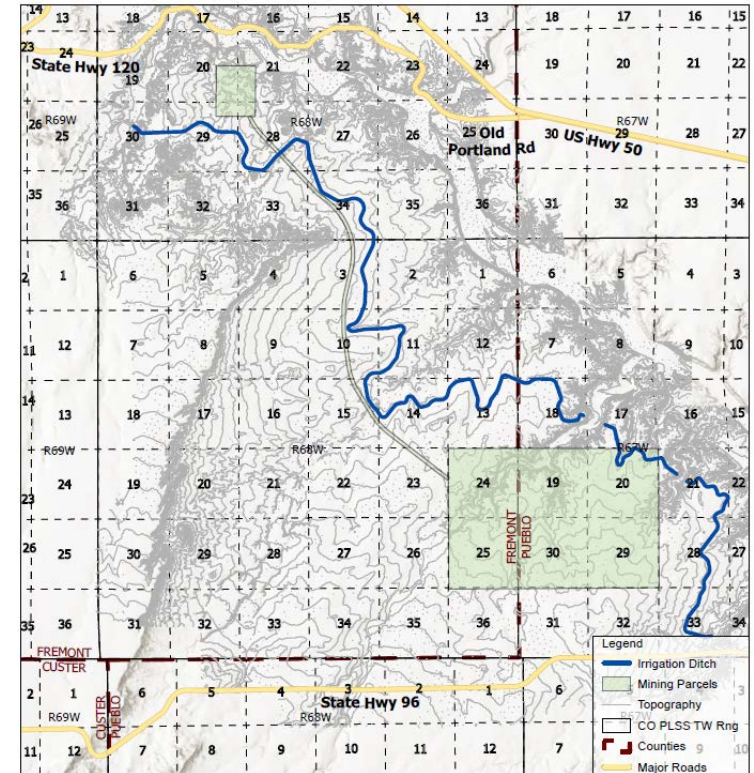
- Department of Public Health and Environment
  - Air Pollution Control Division
  - Water Quality Control Division
    - Construction Stormwater Permit – submit prior to commencement of construction
    - Mine Stormwater Discharge Permit – will be submitted late 2025
- Division of Water Resources
  - Augmentation/Substitute Water Supply Plan
- Division of Reclamation, Mining, and Safety
  - Ongoing (Approved Feb 2024)
    - Water monitoring – both surface and ground
    - Point of Compliance well construction
- Department of Transportation (CDOT)
  - CDOT Access permit onto Hwy 96 (Approved January 2024 and improvements were completed and approved in 2024)





## RED CREEK QUARRY - CUP 24-001

- **Local**
  - Fremont County CUP
    - Public Hearing
  - Pueblo County Special Use Permit
    - To be submitted
- **Federal**
  - U.S. Army Corps of Engineers Nationwide Permit Program - 44
    - Meeting held June 23



## RED CREEK QUARRY - CUP 24-001





**BUILD YOUR AMBITION**