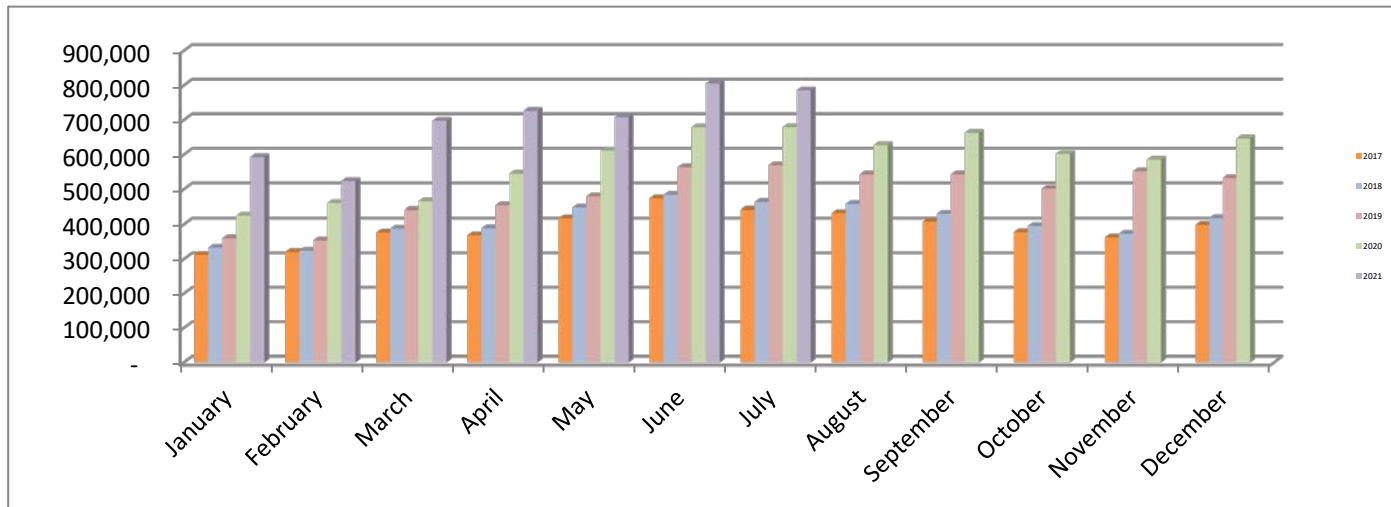


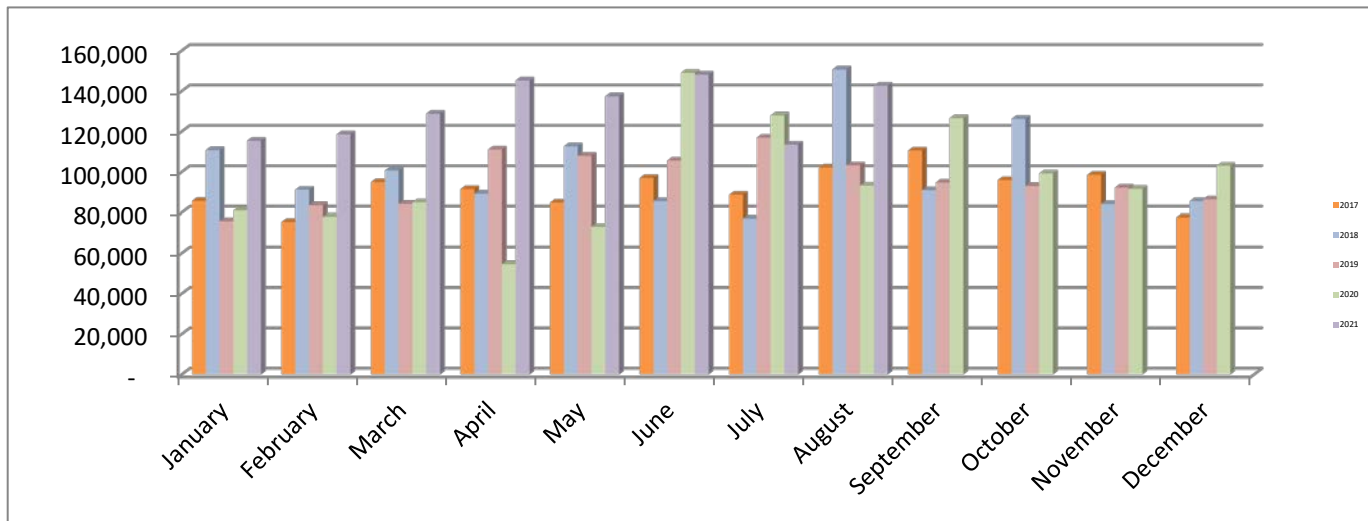
## Fremont County, Colorado Retail Sales Tax Collections Through July 2021

	2017	2018	2019	2020	2021	2021-2020	2021 Budget
<b>January</b>	312,641	333,176	360,248	425,752	592,912	167,159	
<b>February</b>	320,839	324,747	354,110	460,433	523,766	63,333	
<b>March</b>	376,856	388,366	441,083	465,333	697,671	232,339	
<b>April</b>	368,826	389,261	454,084	544,964	726,329	181,365	
<b>May</b>	417,810	447,659	479,743	612,024	708,272	96,248	
<b>June</b>	474,077	483,813	563,455	679,003	805,587	126,584	
<b>July</b>	441,805	463,638	569,527	679,285	785,756	106,471	3,829,785
<b>August</b>	432,627	457,772	542,948	627,461			
<b>September</b>	408,209	431,122	542,979	663,155			
<b>October</b>	378,063	395,753	501,958	602,323			
<b>November</b>	362,932	373,590	552,053	585,502			
<b>December</b>	399,257	418,555	532,641	646,571			
	<b>4,693,941</b>	<b>4,907,452</b>	<b>5,894,830</b>	<b>6,991,805</b>	<b>4,840,292</b>	<b>973,500</b>	<b>1,010,508</b>



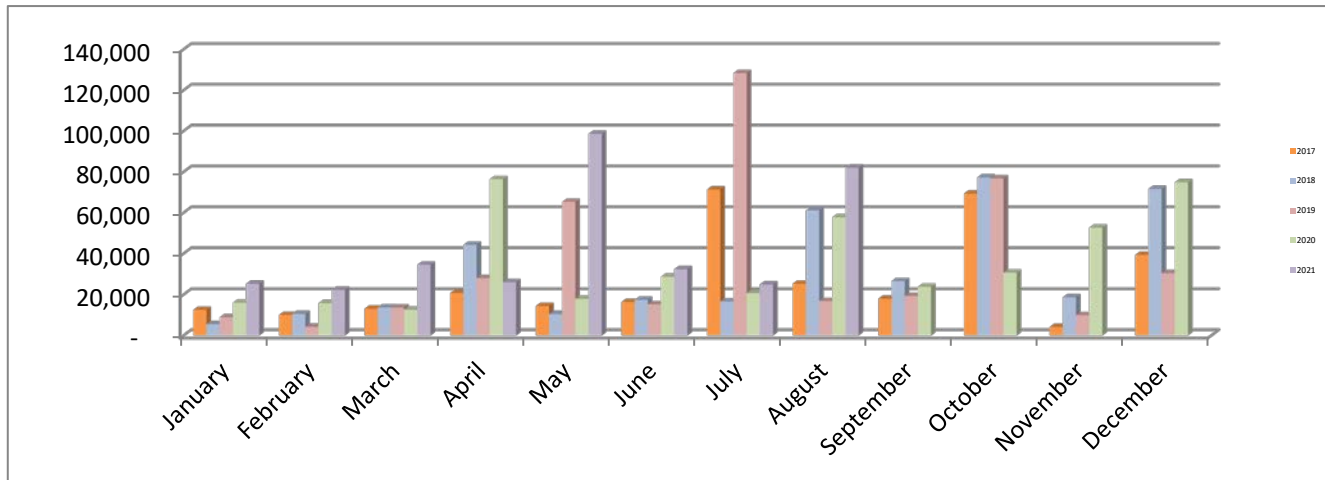
## Fremont County, Colorado Auto Use Tax Collections Through August 2021

	2017	2018	2019	2020	2021	2021-2020	2021 Budget
<b>January</b>	85,618	110,746	75,810	80,944	115,407	34,463	
<b>February</b>	75,454	91,173	83,505	78,006	118,570	40,564	
<b>March</b>	94,963	100,650	84,154	84,954	128,777	43,823	
<b>April</b>	91,504	89,206	111,057	54,640	145,252	90,612	
<b>May</b>	84,844	112,645	107,893	73,072	137,408	64,336	
<b>June</b>	96,973	85,544	105,577	149,045	148,120	(924)	
<b>July</b>	88,696	77,166	116,909	127,927	113,466	(14,461)	
<b>August</b>	102,167	150,696	103,234	93,200	142,678	49,478	767,610
<b>September</b>	110,572	90,931	94,698	126,580			
<b>October</b>	95,941	126,247	92,979	99,204			
<b>November</b>	98,536	84,081	92,204	91,596			
<b>December</b>	77,659	85,542	86,427	103,009			
	<b>1,102,925</b>	<b>1,204,627</b>	<b>1,154,448</b>	<b>1,162,178</b>	<b>1,049,679</b>	<b>307,891</b>	<b>282,069</b>



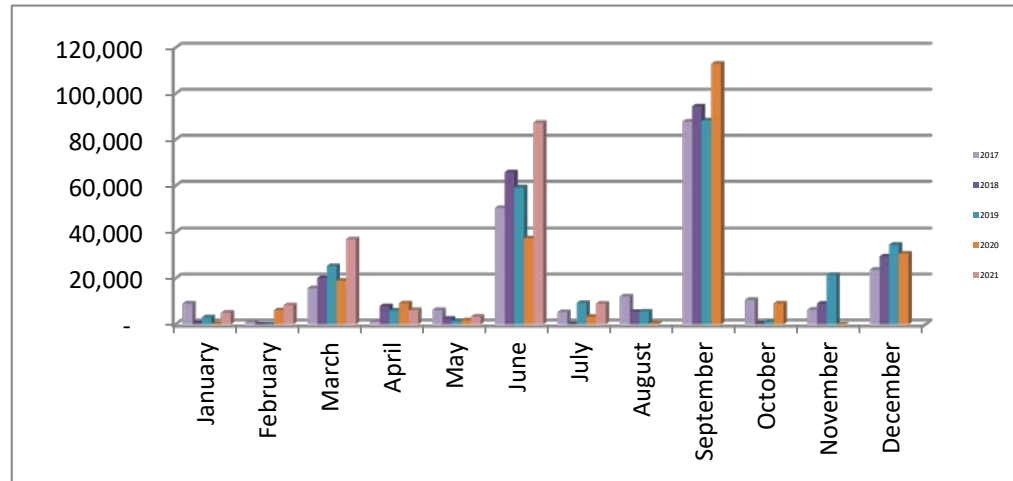
## Fremont County, Colorado Construction Use Tax Collections Through August 2021

	2017	2018	2019	2020	2021	2021-2020	2021 Budget
<b>January</b>	12,540	5,546	8,907	16,037	25,264	9,227	
<b>February</b>	10,046	10,559	4,271	15,807	22,306	6,499	
<b>March</b>	13,109	13,755	13,711	12,613	34,553	21,940	
<b>April</b>	20,807	44,270	28,017	76,446	26,039	(50,407)	
<b>May</b>	14,422	10,498	65,317	17,950	98,648	80,697	
<b>June</b>	16,384	17,432	15,274	28,704	32,389	3,686	
<b>July</b>	71,384	16,667	128,369	20,703	24,920	4,217	
<b>August</b>	25,316	61,144	16,861	57,780	82,050	24,270	250,667
<b>September</b>	17,999	26,572	19,355	23,806			
<b>October</b>	69,386	77,262	76,831	30,721			
<b>November</b>	4,202	18,690	9,946	52,680			
<b>December</b>	39,380	71,664	30,451	74,866			
	<b>314,974</b>	<b>374,061</b>	<b>417,308</b>	<b>428,113</b>	<b>346,170</b>	<b>100,129</b>	<b>95,503</b>



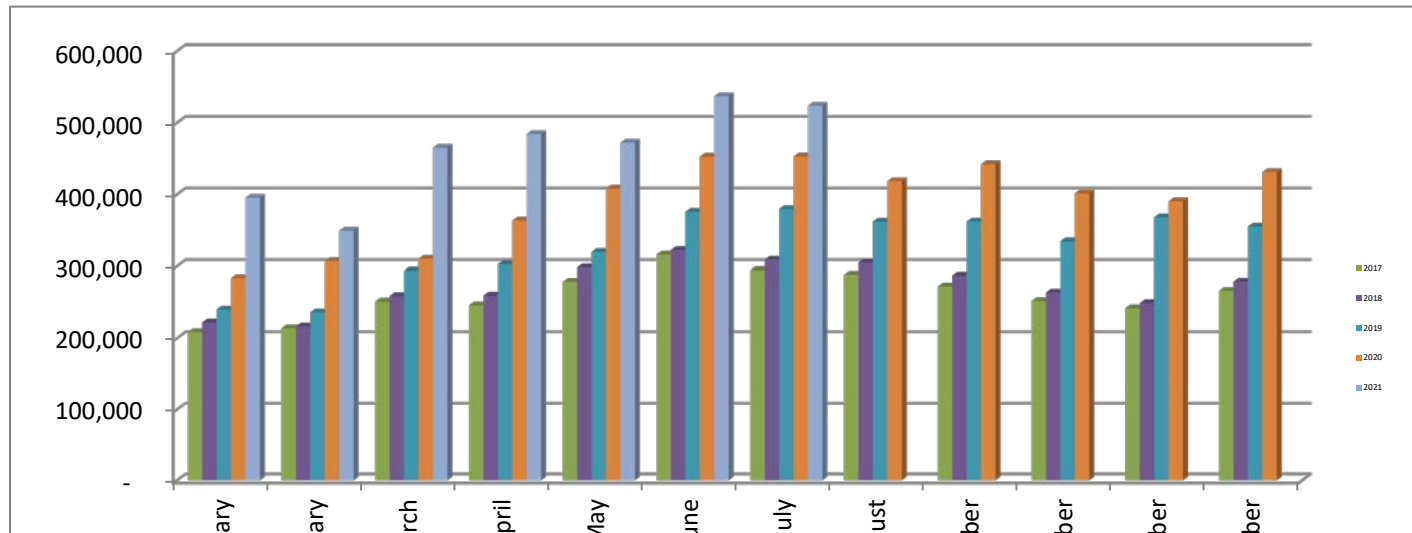
## Fremont County, Colorado Lodging Tax Through July 2021

	2017	2018	2019	2020	2021	2021-2020
<b>January</b>	8,964	637	3,022	147	4,993	4,846
<b>February</b>	1,043	1	-	6,051	8,236	2,185
<b>March</b>	15,660	20,165	25,316	18,932	36,936	18,004
<b>April</b>	1,185	7,910	6,009	9,088	6,144	(2,944)
<b>May</b>	6,213	2,433	1,429	1,768	3,300	1,531
<b>June</b>	50,541	65,802	59,320	37,337	87,331	49,994
<b>July</b>	5,243	188	9,285	3,285	8,908	5,623
<b>August</b>	12,109	5,442	5,536	248		
<b>September</b>	87,781	94,458	88,346	112,962		
<b>October</b>	10,598	335	1,242	9,049		
<b>November</b>	6,309	9,030	21,446	-		
<b>December</b>	23,684	29,505	34,579	30,683		
	<b>229,329</b>	<b>235,905</b>	<b>255,528</b>	<b>229,551</b>	<b>155,847</b>	<b>79,238</b>



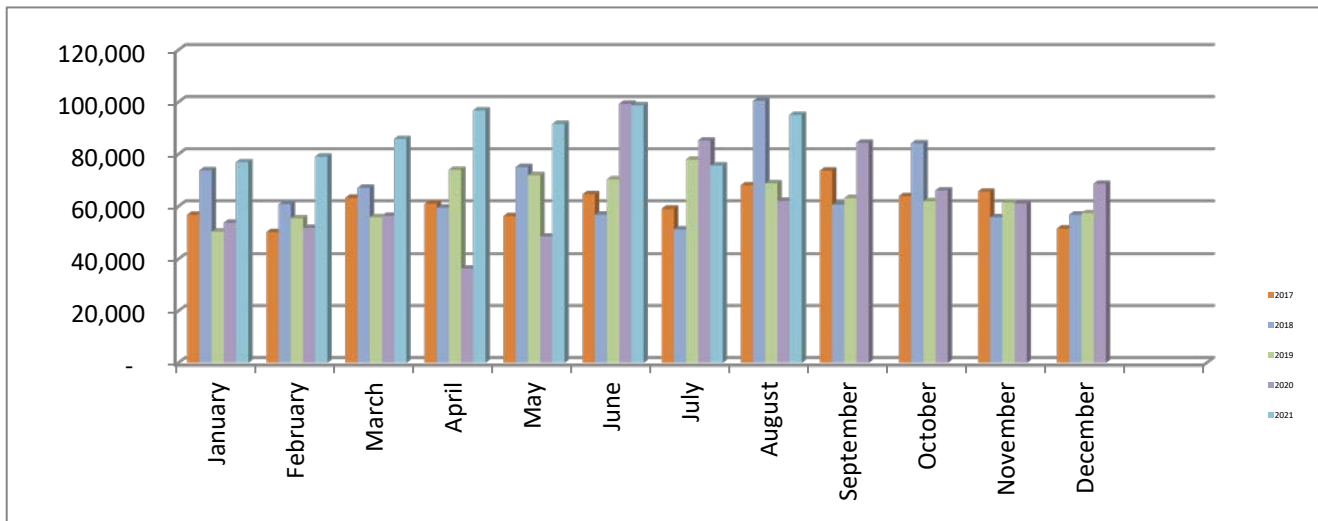
**Fremont County, Colorado**  
**Sheriff - Retail Sales Tax Collections**  
**Through July 2021**

	2017	2018	2019	2020	2021	2021-2020	2021 Budget
<b>January</b>	208,427	222,117	240,166	283,835	395,275	111,440	
<b>February</b>	213,893	216,498	236,073	306,955	349,178	42,222	
<b>March</b>	251,237	258,910	294,056	310,222	465,114	154,892	
<b>April</b>	245,884	259,507	302,723	363,309	484,219	120,910	
<b>May</b>	278,540	298,440	319,829	408,016	472,181	64,165	
<b>June</b>	316,051	322,542	375,637	452,669	537,066	84,397	
<b>July</b>	294,536	309,092	379,685	452,856	523,837	70,981	2,577,862
<b>August</b>	288,418	305,182	361,966	418,307			
<b>September</b>	272,139	287,415	361,986	442,103			
<b>October</b>	252,042	263,836	334,639	401,548			
<b>November</b>	241,954	249,060	368,035	390,335			
<b>December</b>	266,171	279,036	355,094	431,047			
	<b>3,129,294</b>	<b>3,271,635</b>	<b>3,929,887</b>	<b>4,661,203</b>	<b>3,226,870</b>	<b>649,008</b>	<b>649,008</b>



**Fremont County, Colorado**  
**Sheriff - Auto Use Tax Collections**  
**Through August 2021**

	2017	2018	2019	2020	2021	2021-2020	2021 Budget
<b>January</b>	57,079	73,830	50,540	53,962	76,938	22,976	
<b>February</b>	50,363	60,782	55,670	52,004	79,047	27,042	
<b>March</b>	63,308	67,100	56,103	56,636	85,851	29,215	
<b>April</b>	61,002	59,471	74,038	36,427	96,835	60,408	
<b>May</b>	56,562	75,097	71,929	48,715	91,605	42,890	
<b>June</b>	64,649	57,030	70,385	99,363	98,747	(616)	
<b>July</b>	59,130	51,444	77,939	85,285	75,644	(9,641)	
<b>August</b>	68,111	100,464	68,822	62,133	95,119	32,986	511,834
<b>September</b>	73,714	60,621	63,132	84,387			
<b>October</b>	63,961	84,165	61,986	66,136			
<b>November</b>	65,691	56,054	61,470	61,066			
<b>December</b>	51,772	57,028	57,618	68,673			
	<b>735,343</b>	<b>803,085</b>	<b>769,632</b>	<b>774,786</b>	<b>699,786</b>	<b>205,261</b>	<b>187,952</b>



**Fremont County, Colorado**  
**Sheriff - Construction Use Tax Collections**  
**Through August 2021**

	2017	2018	2019	2020	2021	2021-2020	2021 Budget
<b>January</b>	8,360	3,698	5,938	10,663	16,807	6,144	
<b>February</b>	6,697	7,039	2,847	10,538	14,870	4,333	
<b>March</b>	8,739	9,170	9,191	8,408	23,035	14,627	
<b>April</b>	13,993	29,513	18,678	50,964	26,039	(24,925)	
<b>May</b>	9,615	6,999	43,544	11,967	65,765	53,798	
<b>June</b>	10,923	11,622	10,183	18,994	21,461	2,467	
<b>July</b>	47,589	11,112	85,579	13,802	16,133	2,331	
<b>August</b>	16,670	40,686	11,240	39,246	52,710	13,464	153,333
<b>September</b>	11,999	17,715	12,871	16,354			
<b>October</b>	46,465	51,508	51,220	20,480			
<b>November</b>	2,801	12,460	6,631	35,128			
<b>December</b>	26,253	47,776	20,301	49,910			
	<b>210,104</b>	<b>249,297</b>	<b>278,224</b>	<b>286,456</b>	<b>236,822</b>	<b>72,239</b>	<b>83,489</b>

