

FREMONT COUNTY

Resource Mobilization Plan

January 9, 2018



Approvals

This plan is approved by the following:

Chairperson,
Fremont County Board of County Commissioners

Date

RECORD OF CHANGES

Change Number	Section	Date of	Individual	Description of

Review Status

Once a year, or upon significant change, Fremont County will review its Resource Plan, components, and supporting elements, and makes any required updates or changes.

Element Reviewed	Date of	Reviewers

PROMULGATION STATEMENT

Fremont County is responsible to provide programs and services in support of the well-being of County residents and the stability of the local economy. To accomplish this mission the County must ensure its operations are performed efficiently and with minimal disruption, especially during an emergency. This document provides planning and program guidance for implementing Fremont County's Resource Mobilization Plan and programs to ensure the County is capable of conducting essential operations and functions under all threats and conditions. All response agencies and jurisdictions have been provided an opportunity to provide input to this plan.

AUTHORITY

**CRS 24-33.5-701 through 716
CRS 30-10-513
Colorado Disaster Act of 1992**

All towns, cities and response agencies within Fremont County have been provided an opportunity to provide input to this plan.

EXPLANATION OF TERMS

A. Acronyms

AHJ	Agency Having Jurisdiction
DHSEM	Department of Homeland Security and Emergency Management
EOC	Emergency Operations Center
EOP	Emergency Operations Plan
ESF	Emergency Support Function
ICP	Incident Command Post
ICS	Incident Command System
IMT	Incident Management Team
MRC	Medical Reserve Corps
NIMS	National Incident Management System
OEM	Office of Emergency Management
PIO	Public Information Office or Officer
SOP	Standard Operating Procedure

B. Definitions

Special Facilities: Facilities that require unique attention because they house or serve populations that cannot take care of themselves during emergency situations and/or require unique support services. These facilities also have assets that may be of use to similar facilities elsewhere. Such facilities include:

- **Schools and day care centers**, where students/children require supervision to ensure their safety. These often have transportation assets.
- **Hospitals, assisted living facilities and nursing homes**, where patients need specialized health care personnel and equipment to maintain their health. Many of these have transportation assets and medical personnel.
- **Correctional facilities**, where offenders require security to keep them in custody. These facilities have labor, transportation and other assets that may be available.
- **Tourism and transient facilities**, where information may be delayed or special instructions required. These facilities often have swiftwater assets along with some aerial assets.

Table of Contents

Section I	Purpose	6
Section II	Overview	6
Section III	Concept of Operations	7
Section IV	Actions	8
Section V	Authority	10
Section VI	Ordering Process	11
Section VII	Organization and Responsibilities	16
Section VIII	Preparedness Actions	19
Section IX	Reimbursement	20
Section X	Appendices	22

I. PURPOSE

The purpose of this Resource Mobilization Plan is to provide the basic guidance for an emergency event resource ordering system, in order to protect the lives and property of citizens and visitors to Fremont County.

II. Overview

A. Situations

Historically, emergency events have been somewhat frequent in Fremont County but have not severely impacted urbanized areas with the exception of minor flooding. Most events that have occurred in Fremont County have been relatively short-lived although the results are often long lasting. These and other events could adversely affect populated and rural areas throughout the County.

B. Assumptions

1. Local resources will be utilized for normal operations and events that are within county or municipal capabilities.
2. Events that are beyond the scope of county or city capabilities will result in mutual aid agreements with surrounding agencies and jurisdictions being activated.
3. Large scale, long lasting or widespread events may require the use of Regional, State or Federal aid.
4. Frecom Dispatch will be the *initial* ordering point for the IC until, or unless, an Incident Command Post (ICP) is established and/or the EOC is activated.
5. A Local Disaster Declaration may be declared when it is determined that local capabilities have been, or will be, exceeded. This will help to facilitate State and Federal assistance and to release local funds.

III. CONCEPT OF OPERATIONS

- A. This plan is organized consistent with the requirements of the National Response Framework, the National Incident Management System, and the Incident Command System in order to provide assessment, planning,

procurement, deployment, coordination, and support operations to Fremont County agencies to assure a timely and appropriate response to an emergency situation.

- B. Procedures, protocols and plans for hazardous events are developed to govern staff operations at the Emergency Operations Center, if activated, and in the field. These are in the form of an Emergency Support Functions and corresponding Appendices, Incident Annexes, Support Plans and Standard Operating Guidelines. The Sheriff's Incident Management Team has the ability to help coordinate response and recovery efforts at the EOC or in the field.
- C. Throughout the response and recovery periods, management will evaluate and analyze information regarding the identification of the type of event and alerting responders and the public within the projected impact area, develop and update assessments of the situation and status of the impact area, and do contingency planning to meet anticipated demands or needs in accordance with NIMS.
- D. Subject matter expertise may be provided by an appropriate person(s) from a supporting agency with skills pertinent to the type of event, who will advise and/or direct operations within the context of the Incident Command System structure. Support by these experts will be terminated at the earliest practical time.
- E. Procurement from private sources will be made in accordance with current local, state and federal laws and regulations that include emergency procedures under Colorado Statute.
- F. Emergency Support Function (ESF) 7 is the resource ordering section in the EOC. This function may have personnel directly assigned or the EOC Manager/OEM will provide that function upon need.
- G. All county resource ordering must follow the Fremont County Procurement Policy or the FEMA 44 CFR Procurement Policies and Guidance where applicable. These policies are available through Human Resources and OEM and are available at the rear of this plan.
- H. Resource requests will be filled at the lowest level whenever possible. If local providers cannot fill requests then contact regional partners. If regional partners are unable to fill requests then proceed to state.

IV. ACTIONS

- A. Upon notification of an emergency event, and depending on type and scale, the Emergency Operations Center may be activated. Notification of this activation will be provided to Frecom Dispatch and the Incident Commander (IC) at the scene of the incident.
1. If the event or incident does require activation of the EOC then the Emergency Manager and any activated staff will proceed to the EOC. Resource ordering for the incident scene may be done through the EOC at that time *after* consultation and coordination with the Incident Commander.
 2. Procurement of resources will be transferred to the EOC upon activation *and with coordination and approval of the Incident Commander (IC)*.
 - a. During a wildland fire and with the arrival of an outside Incident Management Team (IMT), resources for the wildland fire itself will typically be handled through the Incident Management Team *after* a Delegation of Authority empowers the Incident Management Team to procure fire suppression resources. A County Disaster Declaration will typically be in place at this time.
 - b. Resources needed outside the “footprint” and not included in the Delegation of Authority of the Incident Management Team suppression efforts and all non-suppression resources will normally fall to the Emergency Operations Center and/or Emergency Manager to fulfill. Coordination between the two ordering entities must be continuous.
 3. If the IC has the Sheriff’s Incident Management Team in operation and the EOC is also operational then the ‘on-scene’ logistics section will run all resource requests through the EOC’s logistics section to avoid duplication and prioritization of available resources *or* move the logistics section to the EOC to acquire necessary resources. It will be the responsibility of the EOC to notify the IC when the EOC is operational.
 4. Resource requests will be made in writing using an ICS 213 Resource Request Form *whenever possible*. During initial attack or

upon a rapidly moving event resource requests will be taken by whatever means are available. Typical avenues of ordering through the State will include use of WebEOC whenever possible.

5. The IC is responsible for tracking and assigning all resources and personnel assigned to the incident. This duty may be assigned to someone else if additional personnel are available. A Staging Area with a Manager should be designated to help capture and assign incoming resources.
 6. The IC is also responsible for Demobilizing resources from an incident. Demobilizing resources may be done at the ICP or at the EOC. Coordinating this information is the responsibility of the Incident Commander.
- B. If the event, or incident, does not require activation of the EOC then the Emergency Manager, or his staff/representatives, may proceed to the incident scene to determine resource and logistical needs, if any, or monitor the incident by radio or other means. See section VII. C. 2 for EOC activation information.
1. When there is no activation of the EOC, the Emergency Manager may be incorporated into the Incident Management Team in a position advantageous to the incident upon approval of the Incident Commander.
 2. On local incidents that do not warrant the activation of the EOC the Incident Commander may order resources through his normal means using the Agency's Standard Operating Procedures. This includes requesting support through Mutual Aid with other agencies and jurisdictions.
- C. If local and mutual aid resources are exhausted, or soon will be, the State Division of Homeland Security and Emergency Management Regional Field Manager, or for wildland fire events, the Division of Fire Prevention and Control Regional Fire Management Officer (FMO), should be notified through the Colorado Watch Center at (877) 509-2422. The Fire Management Officer can help determine the usage of the Emergency Fire Fund (EFF) that will enable State support of fire resources. FMOs can assume control of a wildland fire from the Sheriff upon completion of a complexity analysis.

V. AUTHORITY

- A. The authority to request State resource mobilization is vested in the Agency Having Jurisdiction (AHJ) through:
1. The County Emergency Manager or Their Designee.
 2. The County Sheriff.
 3. The Board of County Commissioners.
 4. The Incident Commander acting under a **delegation of authority** from any of the above.
- B. Mobilization of State resources can be initiated by any of the above authorities through the Colorado Watch Center 24 Hour Emergency Line at **(877) 509-2422**. The State EOC will assist any political subdivision at any time through those having vested authority to request State Resource Mobilization. **Appendix B** has more information on the Initial Call to the State.
- C. The authority to order Local and Mutual Aid resources usually falls to the Incident Commander on a small incident where the EOC is not activated and upon the EOC staff (Logistics if available, EOC Manager if not) once an EOC is activated and coordination with the local IC is done. The *initial* requests may go through Frecom Dispatch for completion and tracking. (See **Appendix I**)
- D. Under Emergency Situations normal ordering and procurement policies may be superseded for the duration of the event in order to provide necessary resources in a timely manner. A copy of the relevant section of the Fremont County Procurement Policy is listed in **Appendix F**. These are also granted under Colorado Revised Statutes 24-33.5-704 (2013)

VI. Ordering Process

- A. The ordering process shall be in accordance with approved County, State and Federal practices. This process is recommended for State and local ordering procedures. Information on *NIMS guidelines for personnel and equipment can be found at: <https://www.fema.gov/resource-management-mutual-aid>*.
- B. When circumstances allow:

1. Resource Requests should be done in a written format utilizing standard ICS 213 RR forms as shown in **Appendix C**. These will be done in WebEOC whenever possible.
2. Standard FEMA 'Type' and 'Kind' information for resource requests shall be provided whenever possible.
3. If 'Type' and 'Kind' are not known then requestor should identify the purpose of the resource requested so supplier can supply the correct item.
4. **All costs for ordered resources are the responsibility of the requesting agency.**

C. For Local Resource requests:

1. Follow guidelines above when circumstances allow. Initial Attack (IA) often requires ordering of equipment through Frecom Dispatch. Frecom Dispatch maintains contact lists for response agencies after normal business hours.
2. Prior to an established Incident Command or EOC activation with resource ordering staff, Frecom Dispatch, using the Resource Request Tracking Form provided in **Appendix I**, shall attempt to fill *initial attack* resource orders as quickly as possible while keeping records to include:
 - a. Who ordered resource?
 - b. Where is it coming from?
 - c. When is it needed?
 - d. Where is it going?
 - e. Contact information to include phone or radio information.
3. Upon ordering a resource, the following must be provided to the resource:
 - a. A Point of Contact to include name and/or position and phone number where available.

- b. Location of Staging or location of delivery point.
 - c. Radio channel, if applicable.
 - d. Delivery/Arrival time.
 - e. Any pertinent safety messages
 4. Once an Incident Command Post (ICP) is established with logistics personnel present and prior to EOC activation, ordering and tracking of resources will commence from the ICP. This must be firmly established between Frecom Dispatch and Incident Command with all supporting agencies notified at that time.
 5. When the EOC is activated with an ESF 7 logistics section present then resource ordering and tracking will be run from the EOC ***once coordination between ICP and EOC is established.***
 6. A sample Mutual Aid Activation Flow Chart/Agreement between the fire agencies in the County for Initial Attack for wildland fires is provided at the rear of this plan.
- D. For any resource request made through the State EOC:
1. The EOC, if activated *and coordination between the IC and the EOC is established*, will have responsibility to order State Resources based upon requests from the Incident Commander(s).
 2. Only personnel with the Authority described in Section V may order State Resources.
 3. It has been determined that all local resources have been, or will be, exhausted or unavailable prior to any State resource orders being placed.
 4. A local *complexity analysis* will be developed with input and oversight from the Regional Field Manager. See **Appendix J** for the Complexity Analysis Worksheet.
 5. When possible, WebEOC will be used for resource ordering and tracking *on incidents other than wildland fire*. Wildland fire typically uses the ROSS system once the fire has been transferred to a State or Federal IMT but can utilize WebEOC when necessary.

6. Colorado Search and Rescue Board can be used for resources being used in wilderness Search and Rescue events. These events are usually small in scale and will not normally need the EOC to activate. A direct request to the Colorado Search and Rescue Board by the Sheriff or his designee can be used to accomplish ordering of SAR resources or a WebEOC request may be used if CSRB is unavailable or unable to fulfill the request.
7. Urban Search and Rescue (USAR) assets will be requested through the State using WebEOC whenever possible.
8. The Colorado Mounted Rangers (CMR) can be requested, with approval of the Sheriff and if available, for Law Enforcement support. This may include road patrols, road and access control, support in shelters and the EOC. Frecom Dispatch, Fremont County Sheriff and Emergency Management have contact information for CMR. There is currently no CMR troop in Fremont County so these resources would be ordered through WebEOC with coordination and approval of the Sheriff.

E. Wildland Fire Resources:

1. Most large Wildland Fires in Fremont County are turned over to the Sheriff and then to the State Division of Fire Prevention and Control and on to a federally approved Incident Management Team as soon as possible. This will be based on a complexity analysis from the State Fire Management Officer. That will normally relinquish resource ordering and tracking to the incoming Management Team for suppression purposes.
2. Resource ordering for Wildland Fire is normally accomplished through Pueblo Interagency Dispatch which assumes ordering and tracking of Wildland Fire Resources through the Resource Ordering Status System (ROSS).
3. Small Wildland Fires that do not require State or Federal resources will follow local resource ordering procedures.
4. Resource ordering and procurement for activities not specified in a Delegation of Authority to a Federal Incident Management Team resides in the local Incident Commander, the Agency Having Jurisdiction or the Emergency Operations Center/Emergency Manager once it is activated *and coordination between Incident Command and the EOC has been established.*

5. An In-County Mutual Aid resource request system has been set up for Initial Attack on Wildland Fire to include type of resource requested (Structural, Wildland Fire or Tenders) and where the resources are requested from (East, West or both sides of the County). This information is available at Frecom Dispatch and with each Fire Agency. A copy of this is located in **Appendix E**. The IC will initiate the request through Frecom Dispatch.

F. Medical Resources:

1. Medical agencies such as Public Health and St. Thomas More Hospital have the ability to use EMSYSTEMS to support medical needs when ordering or for the status of medical resources.
 - a. A Medical Surge trailer is located within Fremont County for the purpose of supporting an Alternate Care Facility.
 - b. An MCI Trailer is located at AMR that carries backboards and ancillary equipment for a Mass Casualty Incident.
 - c. A listing of equipment held in the Medical Surge and MCI trailers is listed in **Appendix G** as well as how to request them.
2. The Medical Reserve Corps (MRC) located in Fremont County is available to assist in Medical Emergencies that may overwhelm traditional response. The MRC can be activated through Public Health or the Emergency Management Office.
3. Resource requests for Public Health emergencies may be directed to the Colorado Department of Public Health and Environment. These will initially be directed to the Region and forwarded to the State if the Region is unable to provide requested resources.

G. Sheltering Facilities:

1. Red Cross approved shelters are listed in the Fremont County Basic Emergency Operations Plan and listed in WebEOC.
2. A list of Animal Shelters along with listings of veterinary support is listed in the Fremont County Basic Emergency Operations Plan.
 - a. Additional animal support will normally be available from Animal Control Officers located

within Law Enforcement agencies and the State Humane Society.

3. Public Health and MRC are available to support shelter operations when medical issues arise within the shelter. They can be requested by contacting the Public Health Office or the Office of Emergency Management. During non-office hours Frecom Dispatch can contact either office.

VII. ORGANIZATION AND RESPONSIBILITIES

A. Communications Center (Frecom Dispatch) will:

1. Order resources upon a request from the Incident Commander when neither the Incident Management Team nor EOC has been activated and assumed those duties. Frecom Dispatch will utilize the Resource Request Form which is provided in **Appendix I**.
2. Maintain a list of resources requested through Frecom Dispatch by the Incident Commander or Incident Management Team to include those items mentioned in **Section VI. B. 2.** of this plan.
3. Pass resource request information to the EOC once that has been activated.
4. Communicate with other Communications Centers as needed.

B. Incident Command will:

1. Set up and designate an Incident Command Post (ICP) and provide that information to all responding agencies.
2. Designate an Incident Radio Channel(s) and provide that information to all responding resources and agencies. An ICS 205 Form will be filled out for all communications used for the event. This form should be provided to all response agencies involved.
3. Acquire Incident Command staffing needed to run the incident.
4. Begin the accountability process for resources already on scene or already en-route.
5. Designate a staging area and/or manager for incoming resources.

6. Order resources, or assign personnel to order resources, needed until such time as the EOC is established and resource ordering begins to operate from there. *Coordination between Frecom Dispatch, the EOC and Incident Command for resource ordering must be established at this time.*
7. Coordinate with EOC upon establishment.

C. Fremont County Emergency Manager will:

1. Coordinate disaster planning and operations with the community's emergency response organizations, public utilities, welfare agencies, adjacent jurisdiction emergency management coordinators, and the Division of Homeland Security and Emergency Management.
2. Activate and manage the Emergency Operations Center upon perceived need such as:
 - a. The need for multiple resource ordering becomes apparent.
 - b. The number of agencies or the scale of the event needs overhead support for multiple requirements.
 - c. Coordination is needed between State, Federal or local response.
3. Provide resource ordering and tracking upon activation and staffing of the EOC *after consultation and coordination with the IC and Frecom Dispatch.*
4. Support operations with resources, information and planning.
5. Oversee consequence management of issues or resources not covered by Incident Commander or Incident Management Team(s).
6. Complete and distribute ICS 209 forms and Situation Reports for daily status updates if the EOC is not activated.

D. Emergency Operation Center will:

1. Provide Resource Ordering and Tracking as directed by the Emergency Manager and upon coordination with the Incident Commander and Frecom Dispatch.

2. Activate the necessary staff to support field operations.
3. Track associated records and costs.
4. Anticipate additional resource needs.
5. Plan for next operational period.
6. Collect resource information that has already been requested by other personnel during Initial Attack prior to EOC activation and input them in to WebEOC as appropriate.
7. Complete and distribute ICS 209 forms and Situation Reports for sharing of daily status reports. This can be through WebEOC and direct to local officials.

D. Response Agencies will:

1. Provide a listing of available equipment and resources to the Incident Commander, Incident Management Team or the Emergency Operations Center upon request.
2. Sign personnel and vehicles in and out of the incident at the appropriate area. This may be the Incident Command Post, Staging Area or the EOC depending on assignment.
3. Update equipment and other resource lists annually.
4. Advise of changes of availability of equipment and other resources.
5. Provide personnel, upon request and availability, to the EOC to assist in resource management.
6. Enter agency resources into WebEOC through the use of Cooperative Resource Rate Form (CRRF) Agreements.
7. Track own agency costs to include date, time, mileage and equipment used during activation.

E. Sheriff's Incident Management Team will:

1. Help coordinate resource management with Incident Command and/or Emergency Operations Center.

2. Maintain and provide resource lists, ICS 211 and 218 forms as and when requested by Emergency Management for accountability, resource tracking, demobilization, and reimbursement purposes.
3. Provide personnel, as available and requested, to EOC for operational purposes.
4. Upon activation, gather and track any committed resources already on scene.
5. Use ICS Form 213 RR when requesting resources.

VIII. PREPAREDNESS ACTIONS

A. Training

Training is a critical preparedness component of this plan. The objective is to develop and sustain a capability in Fremont County to routinely implement resource management. Accordingly, training will address the following:

1. **WebEOC**
WebEOC is the State and Region's situation awareness tool as well as the State's resource ordering system.
 - a. The policies for using WebEOC
 - b. Those with a password or shared password should conduct training on the system at least once a quarter.
2. **EOC and Fremont Sheriff's IMT**
 - a. The County EOC shall keep an up to date roster of providers and first responders who have taken EOC and Incident Management Team (IMT) related classes.
 - b. The IMT will provide training and exercise opportunities pertaining to All-Hazards Incident Management to their personnel.
 - c. The IMT will coordinate with the EOC for resource ordering, tracking and staffing needs

B. Exercises

1. The Fremont County Incident Management Team and its members will conduct an exercise yearly. This exercise will have a resource related feature built into the Exercise Plan.
2. All Exercises conducted by Fremont County and its agencies will use the Homeland Security Exercise and Evaluation Program (HSEEP) as a guideline.

C. Planning

1. Resource Management plans will be updated as required to keep information current.
2. This plan will keep an up to date list of local equipment and other resources as provided by local First Responders, Volunteer Agencies and Private Sector or provide access to a location that holds updated information such as WebEOC.
3. Agencies will fill out Cooperative Resource Rate Forms (CRRF) agreements with the State listing their equipment. These will help populate the Fremont County Resource Board on WebEOC.

IX. Reimbursement

1. Reimbursement, if available, for resources used on incidents will be subject to standard processes such as the Emergency Fire Fund, the State's Disaster Emergency Fund, pre-existing agreements or other documents such as AOPs, Mutual Aid documents and the Wildland Emergency Response Fund (WERF). Any reimbursement costs will be based on current Colorado Resource Rate Form (CRRF) or FEMAs Schedule of Equipment rates wherever possible.
2. Rates for private sector equipment will be the rental or purchase rates agreed to through prior written agreements or those prices deemed acceptable through bidding or comparison with other vendors or the State of Colorado authorized reimbursement rate.
3. Ordering processes that include ordering from the State must follow the State Resource Mobilization guidelines in order to qualify for reimbursement except for those ordered through Inter-Agency Dispatch and not approved through the State Emergency Operations Center. Resources ordered through Interagency will be completed

through the interagency process by the agency that ordered the resource.

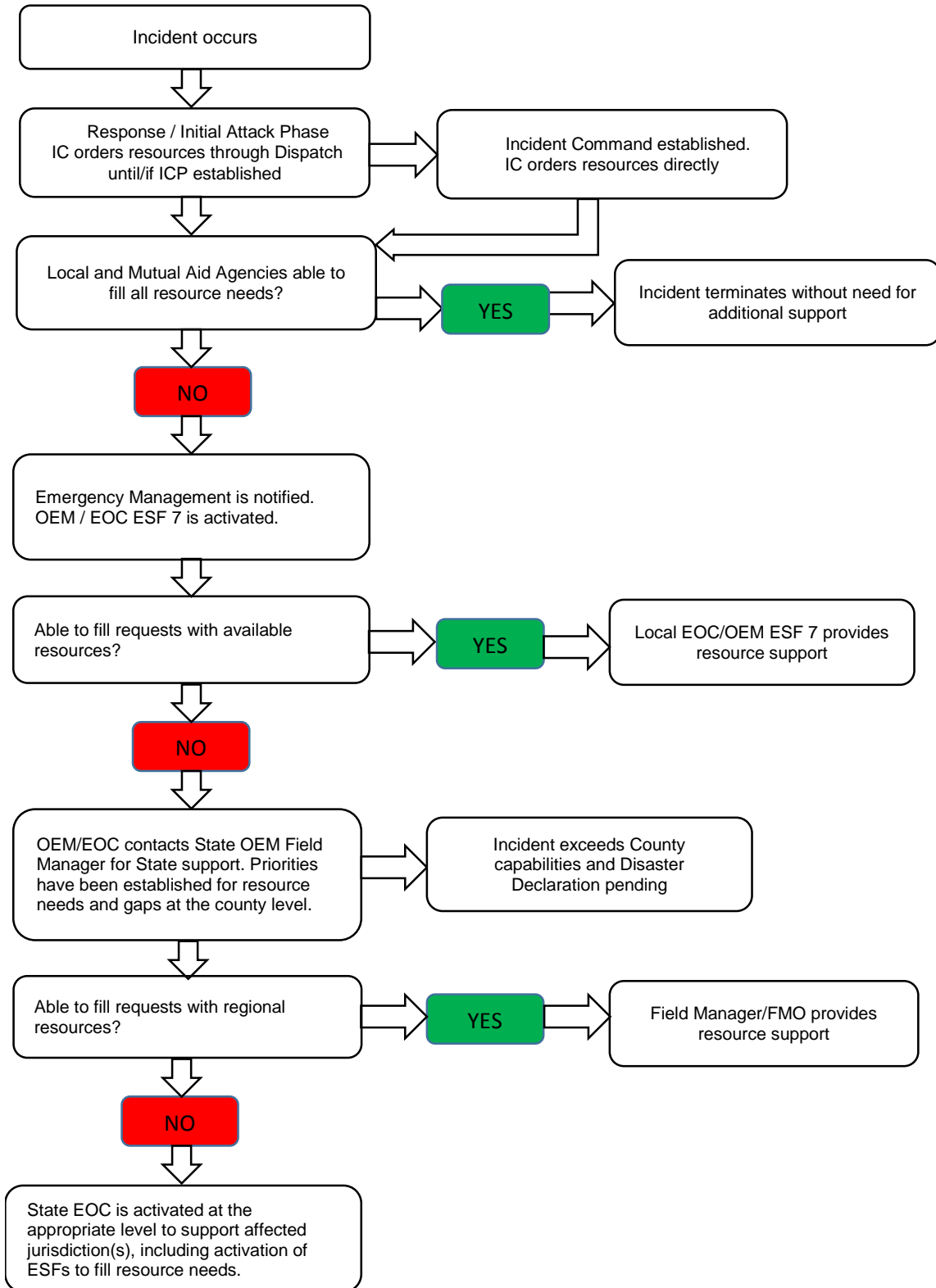
4. For incidents with a Federal Disaster Declaration - reimbursement will be that allowed under the FEMA Disaster Assistance Policy current at that time.
5. Agencies that *independently* order resources not covered by existing agreements are **not eligible** for reimbursement for those costs from state or federal funds.

X. Demobilization

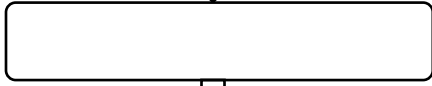
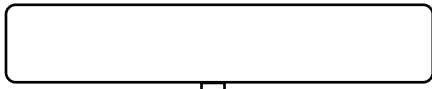
1. The Incident Commander will approve all demobilization of incident resources. The Planning Section is responsible for developing a Demobilization Plan upon need.
2. All mobilized personnel will demobilize through the Incident Command Post, Staging Area or the EOC depending on where the individual was assigned.
3. All resources are responsible for filling out the appropriate forms for themselves and their related equipment. This will include ICS forms 211 and 218 and any other relevant forms. These will be completed before being released.
4. All supervisors will verify that all personnel and equipment are accounted for and that all paperwork is completed before leaving.

XI.	Appendices	Page
A.	Resource Ordering Flow Charts	23
B.	Initial Call for State Assistance Process	26
C.	Resource Ordering Form ICS 213 RR	27
D.	County Resource Lists	28
E.	Mutual Aid Flow Chart for Initial Attack	60
F.	Fremont County Emergency Procurement Policy	61
G.	Medical/MCI Cache Trailer List	63
H.	Radio Frequencies	70
I.	Frecom Dispatch Resource Request Form	74
J.	Complexity Analysis Form	76

APPENDIX A Disaster/Incident



Wildland Fire



YES



NO



YES

YES

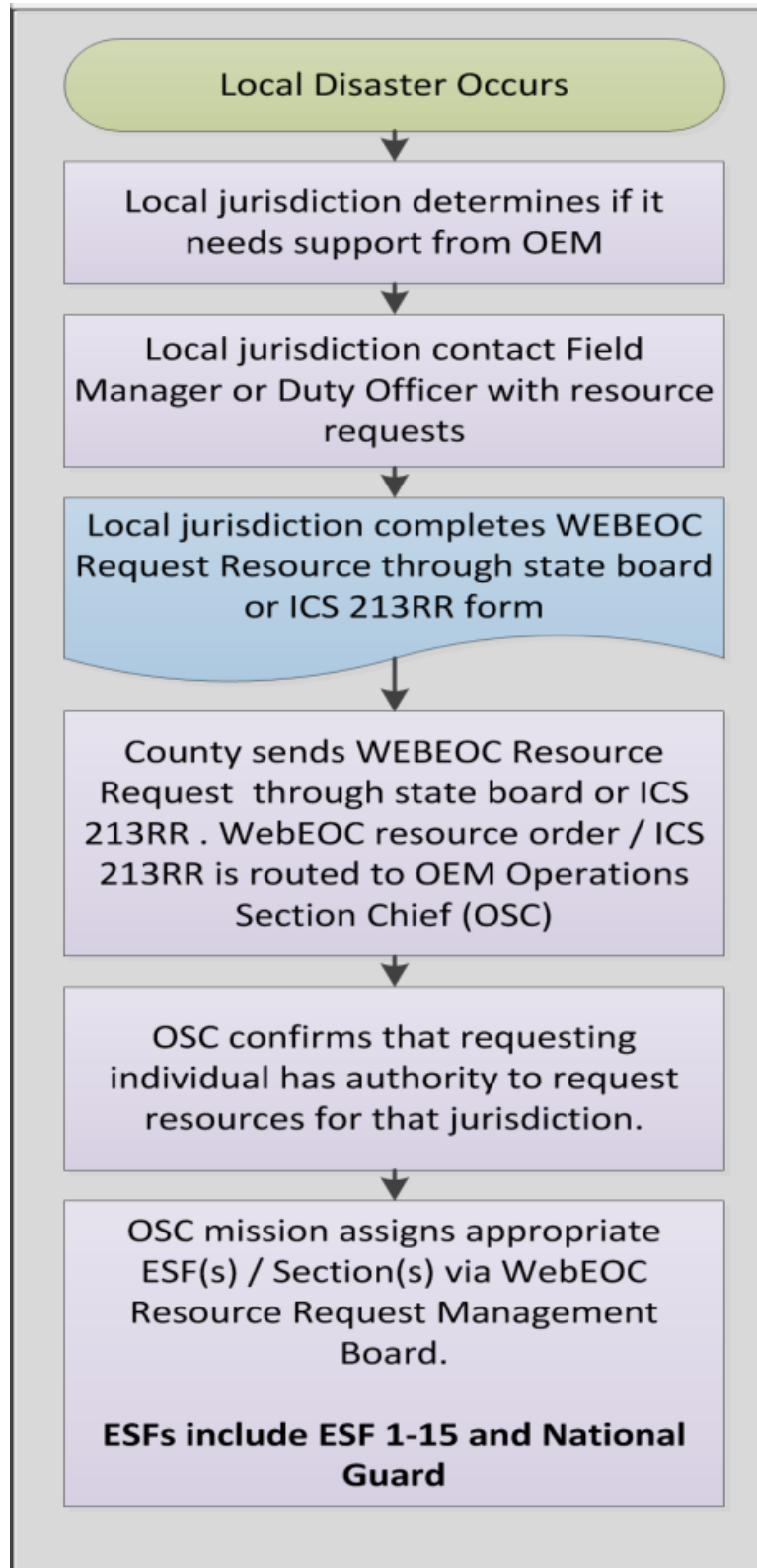
YES

NO

YES

NO

Ordering Resources through WebEOC and the State OEM (DHSEM)



APPENDIX B

Initial Call for State Assistance Information Process

1. To contact the Colorado Division of Homeland Security and Emergency Management (DHSEM) Duty Officer or a Division of Fire Prevention and Control (DFPC) Fire Management Officer (FMO) contact the Colorado Watch Center on the **24-Hour Emergency Line (877) 509-2422**. The information will be routed to the most appropriate agency for response.
2. The Colorado State Patrol may ask for the following information:
 1. Incident Name
 2. Name & Call Back Information
 3. Organization / Jurisdiction
 4. Current Situation
 5. Current Actions
 6. Any needed assistance
3. If Wildfire - CSP Dispatch will contact the area Division of Fire Prevention & Control Fire Management Officer. This will typically be the Canon City office.
4. If not Wildfire - CSP Dispatch contacts the on-call Division of Homeland Security and Emergency Management Duty Officer and provides the information from items listed above, and may also contact the OEM Operations Staff;
5. The State EOC and Resource Mobilization Unit may be activated, and may contact the incident commander, or designee, and request the following information:
 - Quantity, kind and type of resources required
 - Specific assignment or job duties of requested resource
 - Specific reporting location and contact (staging area)
 - Requested time of delivery
 - Communications plan or needs, including travel channel
 - Person/title making request
 - Initial incident information forms (Appendix G)Additional requests for resources from the incident commander will come directly to the SEOC Operations Manager and Resource Support Unit via the County Emergency Manager or Operations Center if available.

**Appendix D
County (Local) Resources**

Fire Resource List

Agency	Resource Category	Resource Kind	Resource Type	Local Resource ID	Dispatch No
Canon City Area Fire Protection District	Fire Fighting	Aerial Apparatus		Ladder 1 - 1999 HME/Smeal - Quint	719-275-8666
Canon City Area Fire Protection District	Fire Fighting	Engine Fire (Pumper)	Type 1	Engine 3 - 2003 International 7400 - 4x4 - w/pump and roll capability	719-275-8666
Canon City Area Fire Protection District	Fire Fighting	Engine Fire (Pumper)	Type 1	Engine 1 - 2008 Spartan/Central	719-275-8666
Canon City Area Fire Protection District	Fire Fighting	Engine Fire (Pumper)	Type 1	Engine 2 - 2002 HME/General	719-275-8666
Canon City Area Fire Protection District	Fire Fighting	Tender	Type 3	Tanker 1 - 1983 Indiana - Support	719-275-8666
Canon City Area Fire Protection District	Fire Fighting	Tender	Type 1	Water Tender 1 - 1994 Kenworth KWT-600 - Tactical	719-275-8666
Canon City Area Fire Protection District	Fire Fighting	Hazmat Truck	Type 1	HazMat 1 - 1995 International - 20k gvw	719-275-8666

Canon City Area Fire Protection District	Fire Fighting	Engine Fire (Pumper)	Type 6	Engine 602 - 2003 F550 - 4x4 - CAFS	719-275-8666
Canon City Area Fire Protection District	Fire Fighting	Engine Fire (Pumper)	Type 6	Engine 603 - 2012 Dodge Ram 5500 - 4x4	719-275-8666
Canon City Area Fire Protection District	Fire Fighting	Engine Fire (Pumper)	Type 6	Engine 601 - 2004 F550 - 4x4 - CAFS	719-275-8666
Canon City Area Fire Protection District	Fire Fighting	Utility Vehicle		Inspector 1 - 2013 Jeep Patriot 4x4 - Compact SUV	719-275-8666
Canon City Area Fire Protection District	Fire Fighting	Utility Vehicle		Training/Safety 1 - 1997 Dodge 1500 - 4x4 - 1/2 Ton Pickup	719-275-8666
Canon City Area Fire Protection District	Fire Fighting	Utility Vehicle		Chief 2 - 2014 Dodge Ram 1500 - 4x4 - 1/2 Ton Pickup	719-275-8666
Canon City Area Fire Protection District	Fire Fighting	Utility Vehicle		Chief 1 - 2011 F150 - 4x4 - 1/2 Ton Pickup	719-275-8666
Canon City Area Fire Protection District	Fire Fighting	Utility Vehicle		Battalion Chief 1 - 2008 Dodge ram 2500 - 4x4 - 3/4 Ton Pickup	719-275-8666
Colorado Correctional Industries	Fire Fighting	Hand Crews	Type 2	SWIFT JV-Canon City	719-440-2234

Deer Mountain Fire Protection District	Fire Fighting	Engine Fire (Pumper)	Type 3	Brush #2 - 2014 Dodge 5500 4wd - w/Chainsaw - Foam Injected System	
Deer Mountain Fire Protection District	Fire Fighting	Brush Patrol Firefighting	Type 3	Brush #2 - 2014 Dodge 5500 4wd - w/Chainsaw - Foram Inject System	
Deer Mountain Fire Protection District	Fire Fighting	Tender	Type 3	Tender #4 - Support - 1989 International 4wd - Porta-pond 2k - Spray Bars - Foam Pack	
Deer Mountain Fire Protection District	Fire Fighting	Engine Fire (Pumper)	Type 2	Tender #2 - 1981 International 4wd - Porta-pond 2000 gal.	
Deer Mountain Fire Protection District	Fire Fighting	Tender	Type 3	Rescue #1 - Support - 1986 Chevy - Foam and Pro-Pack - Jaws of Life - Porta-Pond	
Deer Mountain Fire Protection District	Fire Fighting	Brush Patrol Firefighting	Type 6	Brush #4 - 2012 Dodge 5500 4wd - Chainsaw - Foam Inject System	
Deer Mountain Fire Protection District	Fire Fighting	Brush Patrol Firefighting	Type 7	Brush #3 - 1987 Kaiser 1.5 ton 4wd	
Deer Mountain Fire Protection District	Fire Fighting	Brush Patrol Firefighting	Type 6	Brush #1 - 1995 F350 4wd = w/Chainsaw - Foam Inject w/water.	
Deer Mountain Volunteer Fire Department (Deer Mtn FPD)	Fire Fighting	Brush Patrol Firefighting	Type 5	Brush 1	

Deer Mountain Volunteer Fire Department (Deer Mtn FPD)	Fire Fighting	Brush Patrol Firefighting	Type 5	Brush 2	
Deer Mountain Volunteer Fire Department (Deer Mtn FPD)	Fire Fighting	Water Tender Firefighting (Tanker)	Type 1	Tender 2	
Deer Mountain Volunteer Fire Department (Deer Mtn FPD)	Fire Fighting	Water Tender Firefighting (Tanker)	Type 2	Tender 1	
Deer Mountain Volunteer Fire Department (Deer Mtn FPD)	Fire Fighting	Water Tender Firefighting (Tanker)	Type 2	Tender 3	
Deer Mountain Volunteer Fire Department (Deer Mtn FPD)	Fire Fighting	Water Tender Firefighting (Tanker)	Type 2	Tender 4	
DFPC	Fire Fighting	Engine Fire (Pumper)	Type 6	E-461	877 509-2422
Florence Fire Protection District	Fire Fighting	Engine Fire (Pumper)	Type 2	Engine 41 - 1977 Chevy Darley Pumper	
Florence Fire Protection District	Fire Fighting	Engine Fire (Pumper)	Type 2	Engine 40 - 1981 GMC Darley Pumper	
Florence Fire Protection District	Fire Fighting	Tender	Type 3	Tanker 1 - GMC Tanker - 2200 gal	

Florence Fire Protection District	Fire Fighting	Brush Patrol Firefighting	Type 6	Brush 37 - 2002 F450 - 4x4	
Florence Fire Protection District	Fire Fighting	Brush Patrol Firefighting	Type 6	Brush 27 - 2004 F550 -4x4	
Florence Fire Protection District	Fire Fighting	Brush Patrol Firefighting	Type 6	Brush 47 - 2008 F450 - 4x4	
Florence Fire Protection District	Fire Fighting	Engine Fire (Pumper)	Type 1	Engine 29 - 2003 International 4x4	
Florence Fire Protection District	Fire Fighting	Engine Fire (Pumper)	Type 1	Engine 34 - 2004 International 4x4	
Florence Fire Protection District	Fire Fighting	Engine Fire (Pumper)	Type 1	Engine 21 - 1998 Pierce Pumper	
Florence Fire Protection District	Fire Fighting	Engine Fire (Pumper)	Type 1	Engine 26 - 1992 Ford General Pumper	
Fremont County Sheriff's Office	Fire Fighting	Brush Patrol Firefighting	Type 7	Brush 3	
Fremont County Sheriff's Office	Fire Fighting	Brush Patrol Firefighting	Type 6	Brush 2	

Fremont County Sheriff's Office	Fire Fighting	Brush Patrol Firefighting	Type 7	Brush 1	
Fremont County Sheriff's Office	Fire Fighting	Water Tender Firefighting (Tanker)	Type 2	6X6 Water Tender 1	
Fremont County Sheriff's Office	Fire Fighting	ATV		ATV 2	
Fremont County Sheriff's Office	Fire Fighting	ATV		ATV - 1	
Howard Fire Department	Fire Fighting	Aerial Apparatus	Type 3	Unit 207	
Howard Fire Department	Fire Fighting	Engine Fire (Pumper)		Unit 102	
Howard Fire Department	Fire Fighting	Engine Fire (Pumper)	Type 3	Unit 101	
Howard Fire Department	Fire Fighting	Engine Fire (Pumper)	Type 4	603	
Howard Fire Department	Fire Fighting	Engine Fire (Pumper)	Type 4	Unit 610	

Howard Fire Department	Fire Fighting	Water Tender Firefighting (Tanker)	Type 2	Unit 311	
Penrose Volunteer Fire Department (Florence FPD)	Fire Fighting	Illumination Unit		Squad 33	
Tallahassee Volunteer Fire Protection Department	Fire Fighting	Engine Fire (Pumper)	Type 4	Engine 54 - 1969 Kaiser 6x6 - FEPP	
Tallahassee Volunteer Fire Protection Department	Fire Fighting	Engine Fire (Pumper)	Type 1	Engine 11 - 1989 Spartan	
Tallahassee Volunteer Fire Protection Department	Fire Fighting	Engine Fire (Pumper)	Type 6	Engine 56 - 1999 Ford 4x4	
Tallahassee Volunteer Fire Protection Department	Fire Fighting	Engine Fire (Pumper)	Type 3	Engine 13 - 1989 AM General 6x6 - 1000 gal. capacity	
Tallahassee Volunteer Fire Protection Department	Fire Fighting	Engine Fire (Pumper)	Type 1	Engine 21 - 1992 KME 4x4	
Tallahassee Volunteer Fire Protection Department	Fire Fighting	Engine Fire (Pumper)	Type 6	Engine 36 - 1988 GMC 4x4	
Volunteer Fire Protection Department	Fire Fighting	Engine Fire (Pumper)	Type 7	Engine 17 - 1997 Ford 4x4	

Tallahassee Volunteer Fire Protection Department	Fire Fighting	Utility Vehicle		Utility 1 - 1988 GMC 4x4 - <15000	
Tallahassee Volunteer Fire Protection Department	Fire Fighting	Engine Fire (Pumper)	Type 4	Engine 14 - 1993 AM General 6x6 - FEPP	
Tallahassee Volunteer Fire Protection Department	Fire Fighting	Engine Fire (Pumper)	Type 6	Engine 26 - 2001 Dodge 4x4	
Tallahassee Volunteer Fire Protection Department	Fire Fighting	Generators		Gen-Set - Trailer Mounted 133kw	
Tallahassee Volunteer Fire Protection Department	Fire Fighting			Fold-A-Tank 1 - Portable Tank - 2000 gal. - <3000	
Tallahassee Volunteer Fire Protection Department	Fire Fighting			Fold-A-Tank 2 - Portable Tank - 2000 gal. - <3000	
Tallahassee Volunteer Fire Protection Department	Fire Fighting	Utility Vehicle		C2 - 1991 Jeep Cherokee 4x4 - Compact SUV	
Tallahassee Volunteer Fire Protection Department	Fire Fighting	Utility Vehicle		C1 - 1990 Chevy Suburban 4x4 - Full Size SUV	
Tallahassee Volunteer Fire Protection Department	Fire Fighting	ATV	Type 3	ATV - 1996 Kawasaki KLF- 400	

Tallahassee Volunteer Fire Protection Department	Fire Fighting	Tender	Type 3	Tender 13 - 1984 International 4x2 - Support	
Tallahassee Volunteer Fire Protection Department	Fire Fighting	Tender	Type 1	Tactical Tender 12 - T12 - 1991 BMY	
Tallahassee Volunteer Fire Protection Department	Fire Fighting	Engine Fire (Pumper)	Type 6	Engine 16 - 2008 Ford 4x4 - 500 gal tank	
Western Fremont Fire Protection District	Fire Fighting	Generators		Generator - 5 kw - 10 hp	
Western Fremont Fire Protection District	Fire Fighting	Portable Pump		Pump - 8 hp - 300 gpm	
Western Fremont Fire Protection District	Fire Fighting			Tank - Portable - 1500 gal.	
Western Fremont Fire Protection District	Fire Fighting	Engine Fire (Pumper)	Type 6	Engine 23 - State FEPP	
Western Fremont Fire Protection District	Fire Fighting	Engine Fire (Pumper)	Type 6	Engine 24 - 2003 Ford F550 - 4x4	
Western Fremont Fire Protection District	Fire Fighting	Engine Fire (Pumper)	Type 1	Engine 21 - 1981 P.E.M.	

Western Fremont Fire Protection District	Fire Fighting	Engine Fire (Pumper)	Type 1	Engine 22 - 1971 Mack CF-600	
Western Fremont Fire Protection District	Fire Fighting	Tender	Type 3	Tender 25 - 1973 Ford F881	

Health and Medical Resource List

Agency	Resource Category	Resource Kind	Resource Type	Local Resource ID	Dispatch No
Penrose Volunteer Fire Department (Florence FPD)	Health and Medical	Ambulance	Type 1	Rescue 31	
Penrose Volunteer Fire Department (Florence FPD)	Health and Medical	Ambulance	Type 1	MED 38	
Florence Fire Department	Health and Medical	Ambulance	Type 3	Unit 23	
Florence Fire Department	Health and Medical	Ambulance	Type 3	Unit 24	
Fremont County Public Health	Health and Medical	Cache Trailer		OEM - 4 Medical Surge Trailer	
Fremont County Office of Emergency Management	Health and Medical	Cache Trailer	Type 2	Mass Casualty Trailer	

Deer Mountain Fire Protection District	Health and Medical	Ambulance	Type 1	Medical #2 - 1990 Ford Ambulance w/BLS	
Deer Mountain Fire Protection District	Health and Medical	Ambulance	Type 1	Medical #1 - 1992 Ford Ambulance - w/BLS	
Arkansas Valley Ambulance	Health and Medical	Medical Unit	Type 1	A1	
Arkansas Valley Ambulance	Health and Medical	Medical Unit	Type 2	A4	
American Medical Response - Canon City	Health and Medical	Ambulance	Type 1	CO-AMCY 1	719-269-3066
American Medical Response - Canon City	Health and Medical	Ambulance	Type 1	CO-AMCY 2	719-269-3066
American Medical Response - Canon City	Health and Medical	Ambulance	Type 1	CO-AMCY 3	719-269-3066
American Medical Response - Canon City	Health and Medical	Ambulance	Type 1	CO-AMCY 4	719-269-3066
American Medical Response - Canon City	Health and Medical	Ambulance	Type 1	CO-AMCY 5	719-269-3066

Transportation Resource List

Agency	Resource Category	Resource Kind	Resource Type	Local Resource ID	Dispatch No
Fremont County Office of Emergency Management	Transportation	Truck		OEM - 3	
Deer Mountain Fire	Transportation	Utility Vehicle	Type 6	3381	

Hazardous Materials Resource List

Agency	Resource Category	Resource Kind	Resource Type	Local Resource ID	Dispatch No
Fremont County Office of Emergency Management	Hazardous Materials Response	Hazmat Trailer		OEM - 2 Decontamination Trailer	
Canon City Area Fire Protection District	Hazardous Materials Response	Team	Type 1	Hazardous Materials Team	719-275-8666

Communications Resource List

Agency	Resource Category	Resource Kind	Resource Type	Local Resource ID
Fremont County Office of Emergency Management	Communications	Mobile Communications	Type 5	ICRI (Incident Command Radio Interface)

Incident Management Resource List

Agency	Resource Category	Resource Kind	Resource Type	Local Resource ID	Dispatch No
Fremont County Sheriff's Office	Incident Management	Mobile Communications	Type 7	Mobile Command unit	
Fremont County Office of Emergency Management	Incident Management	Command Vehicle	Type 5	OEM - 1 Command Trailer	

Search and Rescue Resource List

Agency	Resource Category	Resource Kind	Resource Type	Local Resource ID	Dispatch No
Fremont County Search and Rescue	Search and Rescue	Wilderness Search and Rescue	Type 3		
Fremont County Search and Rescue	Search and Rescue	Swift Water/Flood Search and Rescue	Type 5		
Fremont County Search and Rescue	Search and Rescue	ATV			
Fremont County Search and Rescue	Search and Rescue	ATV			
Deer Mountain Fire	Search and Rescue	Rescue	Type 5	3380	

Public Works Resource List
Fremont County

Agency	Resource Category	Resource Kind	Resource Type	Local Resource ID	Dispatch No
Fremont County Department of Transportation	Public Works	1993 Broce Broom Vin #87134/ 079 AVR	Pavement Broom	CS27	
Fremont County Department of Transportation	Public Works	Chainsaw (3) Each	Chainsaw		
Fremont County Department of Transportation	Public Works	Chainsaw, Pole (3) Each	Pole Saw		
Fremont County Department of Transportation	Public Works	2003 Vermeer Chipper, Brush Vin #1VRU111A131003399/ 344 CRE	Trailer Mount	CS35	
Fremont County Department of Transportation	Public Works	1997 Hypac Pneumatic Roller Vin #A091C45224/ 135 HZH	Wheel Roller	CS14	
Fremont County Department of Transportation	Public Works	2008 Dynapac Vibratory Roller Vin #60213965/ None	Vibratory Drum	CS39	
Fremont County Department of Transportation	Public Works	1993 Ford Tractor/ CX15 Mower Vin #4473730/ 055 AVR	Brush Cutter	106	
Fremont County Department of Transportation	Public Works	2005 JD 5525/ CX15 Mower Vin #LV5525S150047/ 265 EUG	Brush Cutter	214	

Fremont County Department of Transportation	Public Works	1995 Cat Dozer D6H Vin #3ZF05699/ 466 FOB	Dozer	CS15	
Fremont County Department of Transportation	Public Works	2008 JD 200CLC Excavator Vin #508730/ 137 HZH	Excavator	CS40	
Fremont County Department of Transportation	Public Works	Allis Chalmers Fork Lift Vin #5406100/ None	Fork Lift	CS11	
Fremont County Department of Transportation	Public Works	2007 Cat Grader 140H Vin #KCCA03304/ 625 CIN	Grader	122	
Fremont County Department of Transportation	Public Works	1998 Cat Grader 140H Vin #9TN666/ 535 BFD	Grader	140	
Fremont County Department of Transportation	Public Works	1998 Cat Grader 140H Vin #2ZK3102/ 069 AVR	Grader	228	
Fremont County Department of Transportation	Public Works	1998 Cat Grader 140H Vin #2ZK7686/ 253 EUG	Grader	257	
Fremont County Department of Transportation	Public Works	1998 Cat Grader 140H Vin #9TN170/ 075 AVR	Grader	319	
Fremont County Department of Transportation	Public Works	1999 Cat Grader 140H Vin #2ZK4434/ 539 BFD	Grader	321	

Fremont County Department of Transportation	Public Works	1998 Cat Grader 140H Vin #2ZK3412/ 054 AVR	Grader	407	
Fremont County Department of Transportation	Public Works	2010 JD Grader 870GP Vin #1DW870GPLA0630926/ 138 HZH	Grader	CS48	
Fremont County Department of Transportation	Public Works	2010 JD Grader 870GP Vin #1DW870GPLA0630901/ 139 HZH	Grader	CS49	
Fremont County Department of Transportation	Public Works	1996 JD 624G Loader Vin #DW624GB549215/ 063 AVR	Wheel Loader	120	
Fremont County Department of Transportation	Public Works	1996 JD 544G Loader Vin #DW544GB557662/ 068 AVR	Wheel Loader	222	
Fremont County Department of Transportation	Public Works	1998 Cat 938G Loader Vin #06WS829-732046/ 073 AVR	Wheel Loader	317	
Fremont County Department of Transportation	Public Works	1998 Cat 938F Loader Vin #1KM02431/ 522 BFD	Wheel Loader	427	
Fremont County Department of Transportation	Public Works	1996 Cat 446B Backhoe Vin #5BL01023/ 062 AVR	Backhoe Wheel Loader	119	
Fremont County Department of Transportation	Public Works	1997 JD 410E Backhoe Vin #TO410EX836969/ 136 HZH	Backhoe Wheel Loader	270	

Fremont County Department of Transportation	Public Works	1996 JD 410D Backhoe Vin #823834/ 261 EUG	Backhoe Wheel Loader	306	
Fremont County Department of Transportation	Public Works	1998 JD 410E Backhoe Vin #TO410EX846354/ 419 BHH	Backhoe Wheel Loader	422	
Fremont County Department of Transportation	Public Works	Snow Plow, Grader Mount (4) Each	Snow Plow Front Mount		
Fremont County Department of Transportation	Public Works	Snow Wing, Grader Mount	Snow Wing		
Fremont County Department of Transportation	Public Works	Snow Plow, Truck Mount (11) Each	Snow Plow		
Fremont County Department of Transportation	Public Works	1995 AMZ Water Pump Vin #4163DGE411CB1211/ 269 EGU	Trailer Mounted Pump	CS22	
Fremont County Department of Transportation	Public Works	1980 Gorman Rupp Water Pump Vin #ID37573COLO/ 067 AVR	Trailer Mounted Pump	216	
Fremont County Department of Transportation	Public Works	Tailgate Roll Sander (4) Each	Tailgate Sander		
Fremont County Department of Transportation	Public Works	V-Box Sanders (7) Each	V-Box Sander		

Fremont County Department of Transportation	Public Works	Portable Tank/ Mounted on Lowboy Trailer	Portable Tank		
Fremont County Department of Transportation	Public Works	1993 GMC Water Truck Vin #4V2JCBME1PR820832/ 385AVL	Water Tender	CS42	
Fremont County Department of Transportation	Public Works	1988 Kenworth T600 Water Truck Vin #1XKAD29XXJJ501031/ 927 RBR	Water Tender	134	
Fremont County Department of Transportation	Public Works	1998 Kenworth T800 Water Truck Vin #1XKDDT9X6WJ760173/ 197 EUG	Water Tender	255	
Fremont County Department of Transportation	Public Works	1985 Ford LTL9000 Water Truck Vin #1FDYA90W7FVA50653/ 658 BFA	Water Tender	310	
Fremont County Department of Transportation	Public Works	1967 Clements Belly Dump Trailer Vin #50BH3756W/ 516 BFD	Belly Dump Trailer	CS44	
Fremont County Department of Transportation	Public Works	1979 Timppte Belly Dump Trailer Vin #D79011301/ 082 AVR	Belly Dump Trailer	147	
Fremont County Department of Transportation	Public Works	1980 Timppte Belly Dump Trailer Vin #D79323301/ 515 BFD	Belly Dump Trailer	316	
Fremont County Department of Transportation	Public Works	1976 Timppte Belly Dump Trailer Vin #D76148301/ 514 BFD	Belly Dump Trailer	419	

Fremont County Department of Transportation	Public Works	1993 Eager Beaver Lowboy Vin #112SD2478RLO41863/060 AVR	Equipment Trailer	CS10	
Fremont County Department of Transportation	Public Works	2004 Eager Beaver Lowboy Vin #112SCZ4274I063233/256 EUG	Equipment Trailer	411	
Fremont County Department of Transportation	Public Works	1982 Trailmobile Tanker Vin #1PTN23EJOC4000001/540 BFD	Water Tender	CS45	
Fremont County Department of Transportation	Public Works	172 Kari-Kool Tanker Vin #KK5037/ 886 CGR	Water Tender	226	
Fremont County Department of Transportation	Public Works	2004 International 7600 Vin #1HTWYAXR54J087572/800 HPH	Dump Truck	142	
Fremont County Department of Transportation	Public Works	2004 International 7600 Vin #1HTWYAXR54J087571/285 VGX	Dump Truck	143	
Fremont County Department of Transportation	Public Works	2005 International 7600 Vin #1HTWYSBT35J151554/833 HPH	Dump Truck	264	
Fremont County Department of Transportation	Public Works	2005 International 7600 Vin #1HTWYSBT35J151555/832 HPH	Dump Truck	265	
Fremont County Department of Transportation	Public Works	2008 International 7600 Vin #1HTWYSBT98J573686/914RBR	Dump Truck	354	

Fremont County Department of Transportation	Public Works	2008 International 7600 Vin #1HTWYSBT89J140703/ 959 RBR	Dump Truck	355	
Fremont County Department of Transportation	Public Works	2008 International 7600 Vin #1HTWYSBT78J573685/ 913 RBR	Dump Truck	440	
Fremont County Department of Transportation	Public Works	2010 Kenworth T800 Vin #INKDLU0X2AJ275439/ 458 TTW	Dump Truck	166	
Fremont County Department of Transportation	Public Works	2010 Kenworth T800 Vin #INKDLU0X9AJ275440/ 459 TTW	Dump Truck	273	
Fremont County Department of Transportation	Public Works	2010 Kenworth T800 Vin #INKDLU0X0AJ275441/ 460 TTW	Dump Truck	274	
Fremont County Department of Transportation	Public Works	2010 Kenworth T800 Vin #INKDLU0X2AJ275442/ 461 TTW	Dump Truck	464	
Fremont County Department of Transportation	Public Works	1975 Ford F350 With Welder Vin #F37YLLW81981/ 414 AVL	Flatbed Truck	110	
Fremont County Department of Transportation	Public Works	2001 GMC 1500 4X4 Vin #1GTEK19T21E269091/ 664 BFA	Support Equipment	101	
Fremont County Department of Transportation	Public Works	2001 GMC 1500 4X4 Vin #1GTEK19T91E268603/ 663 BFA	Support Equipment	201	

Fremont County Department of Transportation	Public Works	2001 GMC 1500 4X4 Vin #1GTEK19T51E268503/ 665 BFA	Support Equipment	301	
Fremont County Department of Transportation	Public Works	2005 Dodge 2500 4X4 Vin #3D7KS28C55G812108/ 839 HPH	Support Equipment	CS1	
Fremont County Department of Transportation	Public Works	2010 Dodge 2500 4X4 Vin #3D7UT2CL4AG117223/ 469 TTW	Support Equipment	CS46	
Fremont County Department of Transportation	Public Works	2010 Dodge 2500 4X4 Vin #3D7UT2CL2AG159311/ 286 VGX	Support Equipment	CS47	
Fremont County Department of Transportation	Public Works	2011 Dodge 2500 4X4 Vin #3D7TT2CL9BG516254/ 287 VGX	Support Equipment	CS50	
Fremont County Department of Transportation	Public Works	2011 Dodge 2500 4X4 Vin #3D7UT2CL2BG522319/ 932 UHC	Support Equipment	CS51	
Fremont County Department of Transportation	Public Works	1986 Chevy Service Truck/ Welder Vin #1GBHC34M3GS6581/ 407 AVL	Support Equipment	CS3	
Fremont County Department of Transportation	Public Works	2008 Dodge 3500 Vin #3D6WG46A58G234424/ 944 RBR	Support Equipment	CS37	
Fremont County Department of Transportation	Public Works	2001 Dodge 3500 With Welder Vin #3B6MF36711M262196/ 225 EUG	Support Equipment	432	

Fremont County Department of Transportation	Public Works	2001 Kenworth W900 Vin #1XKWDU9X61J867795/ 893 CXK	Tractor Truck	163	
Fremont County Department of Transportation	Public Works	2003 Kenworth T800 Vin #1XKWDU9X61J867795/ 893 CXK	Tractor Truck	271	
Fremont County Department of Transportation	Public Works	1998 Kenworth T600 Vin #1XKADB9V1KSS530056/ 050 AVR	Tractor Truck	350	
Fremont County Department of Transportation	Public Works	1997 Kenworth T800 Vin #1XKDDT9X5VR752422/ 542 BFD	Tractor Truck	430	
Fremont County Department of Transportation	Public Works	1993 Hobart Welder Vin #92W523708/ 094 AVR	Welder Portable	233	
Fremont County Department of Transportation	Public Works	1999 Lincoln Welder Vin #14-7963/ 074 AVR	Welder Portable	318	

Canon City

Agency	Resource Category	Resource Kind	Resource Type	Local Resource ID	Dispatch No
Canon City Public Works	Public Works	1988 Chevy Dump Truck 5yd Bob Tail	Dump Truck		
Canon City Public Works	Public Works	1988 Chevy Dump Truck 5yd Bob tail	Dump Truck		

Canon City Public Works	Public Works	1997 Ford Dump Truck 5yd Bob Tail	Dump Truck		
Canon City Public Works	Public Works	1997 Chevy Dump Truck 5yd Bob Tail	Dump Truck		
Canon City Public Works	Public Works	2000 GMC Dump Truck 5yd Bob Tail	Dump Truck		
Canon City Public Works	Public Works	2000 Ford Dump Truck 5yd Bob Tail	Dump Truck		
Canon City Public Works	Public Works	2004 Ford Dump Truck 5yd Bob Tail	Dump Truck		
Canon City Public Works	Public Works	2004 Ford Dump Truck 5yd Bob Tail	Dump Truck		
Canon City Public Works	Public Works	2006 Ford Dump Truck 5yd Bob Tail	Dump Truck		
Canon City Public Works	Public Works	2009 International Dump Truck 10 YD. Box	Dump Truck		
Canon City Public Works	Public Works	1984 Ford Distributor 1000 Water Tank	Water Tank		

Canon City Public Works	Public Works	1996 Ford Water Truck 2000 Gal. Tank/Spray Bar	Tender		
Canon City Public Works	Public Works	1993 Ford Vac/Con Storm Drain Cleaner	Storm Drain Cleaner		
Canon City Public Works	Public Works	2000 John Deere 310 Extenda-Hoe			
Canon City Public Works	Public Works	2005 John Deere Extenda-Hoe			
Canon City Public Works	Public Works	1979 John Deer Grader 12' Moldboard	Grader		
Canon City Public Works	Public Works	1999 Komatsu Grader 12' Moldboard	Grader		
Canon City Public Works	Public Works	1981 Cat Loader 1cy Bucket	Loader		
Canon City Public Works	Public Works	2004 John Deere Loader 3cy Bucket	Loader		
Canon City Public Works	Public Works	2007 Bobcat Skid Loader A300	Loader		

Canon City Public Works	Public Works	2006 Elgin Sweeper 3 Wheeled Pelican	Sweeper		
Canon City Public Works	Public Works	2008 Elgin Sweeper 3 Wheeled Pelican	Sweeper		
Canon City Public Works	Public Works	1970 John Deere Mower Bush Hog	Mower		
Canon City Public Works	Public Works	2008 John Deere Mower Arm	Mower		
Canon City Public Works	Public Works	2008 Lee-Boy Paver 8500 Series/Low Deck, 15' Expandable	Paver		
Canon City Public Works	Public Works	1996 I/R Roller DD-24 Steel Drum/Vibratory	Roller		
Canon City Public Works	Public Works	1996 Hyster Roller Rubber Tire/With Water System	Roller		
Canon City Public Works	Public Works	1963 Falarity Chipper 12'	Chipper		
Canon City Public Works	Public Works	1984 Sreco Rod/Machine	Rod Machine		

Canon City Public Works	Public Works	2004 ¾ ton 4x4 110 gallon diesel tank	Truck		
Canon City Public Works	Public Works	2008 Chevy ¾ ton 4x4	Truck		
Canon City Public Works	Public Works	1992 Dodge ¾ ton	Truck		
Canon City Public Works	Public Works	2001 Dodge ½ ton	Truck		
Canon City Public Works	Public Works	2002 Dodge ¾ ton 4x4	Truck		
Canon City Public Works	Public Works	1997 Ford ¾ ton	Truck		
Canon City Public Works	Public Works	2004 Ford ½ ton 4x4	Truck		
Canon City Public Works	Public Works	2008 Ford ¾ ton 4x4	Truck		
Canon City Public Works	Public Works	1996 GMC 11/2 ton w/Welder and Generator	Truck		

Canon City Public Works	Public Works	1996 GMC 11/2 ton Flatbed	Truck		
Canon City Public Works	Public Works	3003 Ford F650	Truck		
Canon City Public Works	Public Works	1981 Eager Beaver Steel Roller Trailer	Trailer		
Canon City Public Works	Public Works	1995 Taylor Flat Bed	Trailer		
Canon City Public Works	Public Works	1999 Tow Master Flatbed Heavy Equipment Trailer	Trailer		
Canon City Public Works	Public Works	2001 WW Cargo Enclosed Tool Trailer	Trailer		
Canon City Public Works	Public Works	2003 Homemade Airless Painter	Trailer		
Canon City Public Works	Public Works	2007 Tow Master Skid Loader Trailer	Trailer		
Canon City Public Works	Public Works	2008 WW Cargo Enclosed Tool Trailer	Trailer		

Canon City Public Works	Public Works	2011 Homemade Saw Trailer	Trailer		
Canon City Public Works	Public Works	Slide In Sander for Bob Tail	Sander		
Canon City Public Works	Public Works	Slide In Sander for Bob Tail	Sander		
Canon City Public Works	Public Works	Slide In Sander for Bob Tail	Sander		
Canon City Public Works	Public Works	Snow Plow for Bob Tail	Snow Plow		
Canon City Public Works	Public Works	Snow Plow for Tandem	Snow Plow		
Canon City Public Works	Public Works	Roto-Mill for Skid Loader			
Canon City Public Works	Public Works	Push Blade For Skid Loader			
Canon City Public Works	Public Works	Power Broom for Skid Loader			

Canon City Public Works	Public Works	Target Brick Saw 1.5 hp	Saw		
Canon City Public Works	Public Works	Target Concrete Saw 13 hp	Saw		
Canon City Public Works	Public Works	Target Concrete Saw	Saw		
Canon City Public Works	Public Works	Linear Dynamics Airless Painter	Painter		
Canon City Public Works	Public Works	EZ Line Painter	Painter		
Canon City Public Works	Public Works	Demo Saw 14" portable	Saw		
Canon City Public Works	Public Works	Demo Saw 14" portable	Saw		
Canon City Public Works	Public Works	Jumping Jack Tamper	Tamper		
Canon City Public Works	Public Works	Jumping Jack Tamper	Tamper		

Canon City Public Works	Public Works	Plate Tamper	Tamper		
Canon City Public Works	Public Works	Chainsaw 36"	Chainsaw		
Canon City Public Works	Public Works	Chainsaw 18"	Chainsaw		
Canon City Public Works	Public Works	Chainsaw 16"	Chainsaw		
Canon City Public Works	Public Works	Chainsaw 16"	Chainsaw		
Canon City Public Works	Public Works	Chainsaw Pole saw	Chainsaw		
Canon City Public Works	Public Works	Weed Eater (2)	Mower		
Canon City Public Works	Public Works	Weed Eater Wheeled Deck	Mower		
Canon City Public Works	Public Works	Mower Push style	Mower		

Canon City Public Works	Public Works	Concrete Mixer 10cft	Mixer		
----------------------------	-----------------	----------------------	-------	--	--

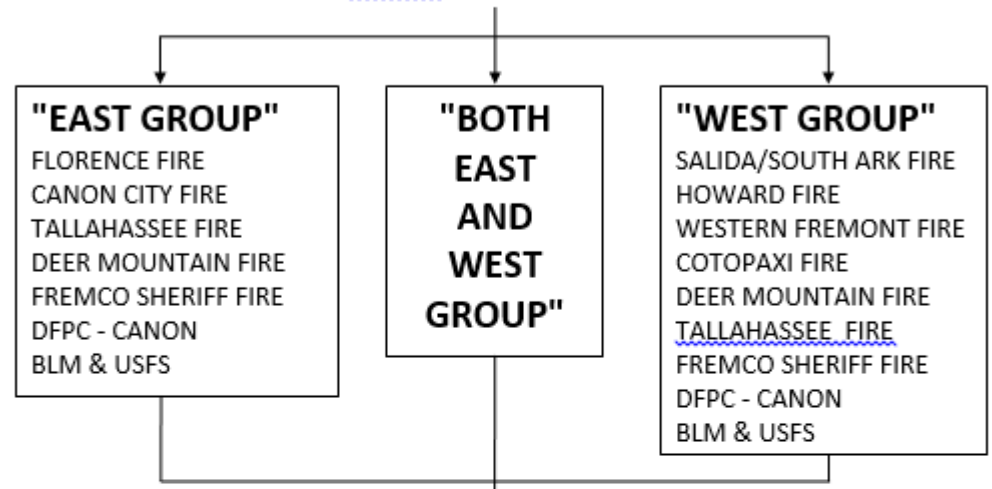
Other

Agency	Resource Category	Resource Kind	Resource Type	Local Resource ID
Fremont County Office of Emergency Management	N/A	Sand Bags (1000 empty)	N/A	Sand Bags
Fremont County Office of Emergency Management	N/A	“Evacuation Route” signs	N/A	Evacuation Signs

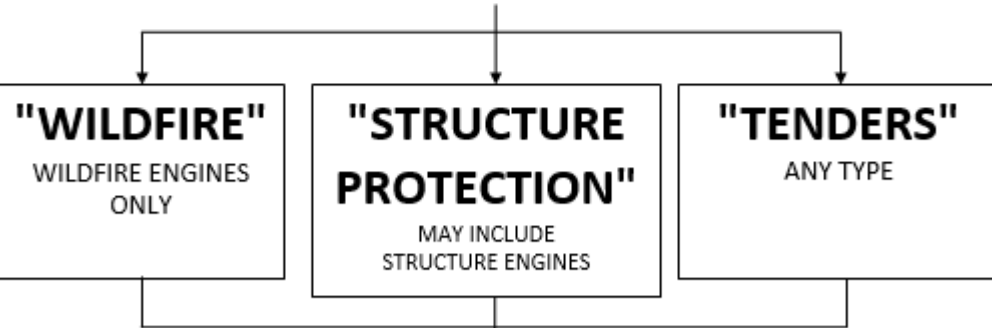
APPENDIX E

Fire Response Agencies
MUTUAL AID - GROUP REQUEST
CONTACT FRE-COMM DISPATCH WITH:

" DEPARTMENT OR INCIDENT NAME **I. C. REQUESTS**
A MUTUAL AID RESPONSE FROM:"
(SELECT ONE OR BOTH)



"FOR:"
(SELECT ANY OR ALL)



"CONTACT STAGING ON FREMONT MAC ONE

STAGING IS LOCATED AT _____;

OUR TACTICAL CHANNEL IS _____." April 12, 2016

APPENDIX F

Emergency Purchasing Policy

Excerpt from the Fremont County Procurement Policy

3.5 Emergency purchases

An emergency condition is a situation that creates a threat to public health, welfare, or safety such as may arise by reason of floods, epidemics, riots, equipment failures, or other such reason as may be proclaimed by a using department. The existence of such condition creates an immediate and serious need for supplies, equipment, materials, and services that cannot be met through normal procurement methods and the lack of which would threaten the function of County government, or the health, safety or welfare of County residents. County departments may make emergency procurements when an emergency condition arises and the need cannot be met through normal procurement methods. An emergency procurement shall be limited only to a quantity of those supplies, equipment, materials, or services necessary to meet the emergency. **There will be no delay for purposes of purchasing emergency goods and/or services.**

Emergency Purchases under Colorado Revised Statutes 29-1-111 (2014):

- In cases of emergency, the governing body of the local government may authorize the expenditure of funds in excess of the budget by ordinance or resolution duly adopted by a minimum two-thirds vote of such governing body.

- If the expense is \$5,000 or more and the emergency occurs during normal business hours (8:00 a.m. - 5:00 p.m., Monday through Friday), the County Manager shall be contacted (in person or by telephone) for guidance on the appropriate action needed to handle the purchasing emergency.

- If the emergency occurs outside of normal business hours, the only emergency purchases authorized are those related to the maintenance and repair of County facilities, to the emergency maintenance of County vehicles and emergency conditions related to the operation of any Sheriff's Office or Department of Transportation activity.

The individual authorizing the emergency purchase will inform the County department of any such purchase made no later than the first working day following the purchase.

If the follow-up review of an emergency purchase indicates that the purchase was not an emergency, the purchase may be disallowed for payment and a determination by the department's Elected Official/Department Head to take the appropriate disciplinary action.

Proper purchase requisition procedures and approval limits remain the same for the authorization of the expenditures; however, formal IFB/RFP procedures may not apply.

The County Manager may authorize a purchase if it is \$25,000 or above, however, the purchase order must be placed on the next scheduled formal agenda for approval by the Board of County Commissioners.

Emergency procurements shall be limited only to a quantity of those supplies, services or construction items necessary to meet the emergency.

NOTE: IN THE EVENT OF A DISASTER, THE OFFICE OF EMERGENCY MANAGEMENT (OEM) PROCEDURES FOR THE EMERGENCY OPERATIONS CENTER WILL BECOME EFFECTIVE.

By relieving the budget constraints, the BOCC allows the OEM the flexibility to obtain goods and services required to react to the emergency or disaster situation.

APPENDIX G

This information is drawn from the Pikes Peak Metropolitan Medical Response System (MMRS) document: Health and Mass Care Caches in the Pikes Peak MMRS Region

Fremont County RETAC Emergency Medical Services/Mass Casualty Incident Cache

This cache was funded through the Health Resources and Services Administration (HRSA) grant for 2004-2005. HRSA does not provide funding to replenish used or damaged supplies. Any item removed from the cache, for any reason, must be documented.

- EMS personnel from any EMS agency can activate the cache for use during a mass casualty incident in the five (5) county region of Southern Colorado RETAC. The supplies are to be used to triage and treat trauma and burn victims of a mass casualty incident. These supplies are to be used in the field.
- EMS personnel activating the cache are required to record items removed from the cache using the tracking form kept with the supplies. This form must be given to the Fremont County EMS Council after the incident for proper documentation and re-inventory of supplies.
- When an item is removed from the cache for use or due to damage, it must be documented on the EMS Cache tracking form.
- The tracking form will be kept with the EMS Cache supplies in the cache trailers. The Fremont County EMS Council will be responsible for this document.
- It is Fremont County EMS Council's responsibility to maintain the EMS Cache tracking documentation and make it available to the Colorado Rural Health Center and the Colorado Department of Public Health and Environment upon request.
- The EMS Cache tracking form will include the name of the item, description, quantity, size, date of inventory and any other relevant information that the Council chooses to collect.
- The form will also include a section for the documentation of the agency personnel removing items for use, signature of person removing items and the date items were removed. This form shall also include, to the best of the agency personnel's knowledge, the destination of the re-usable items to aid in tracking and retrieval.

Location

American Medical Response
3245 E US Highway 50
Cañon City, CO 81212

To Request

EMS personnel from any EMS agency will be given access to the EMS cache by contacting;

- 1) The Fremont County EMS Council Chairperson at (719) 371-8019 or;
- 2) Fremont County OEM
(719) 276-7422 work
(719) 240-1608 cell phone or;
- 3) Local Dispatch

Once an MCI has been verified by any of the above with the appropriate official(s), information for accessing the cache will be relayed to the EMS personnel requesting usage.

Capability

Provide immobilization and medical supplies to treat approximately 50 patients with varied levels of injuries.

Responsible Agency

Storage: American Medical Response

Inventory/Rotation: Fremont County EMS Council

To tow the trailer, the prime mover must have a 2" ball hitch. Therefore the requesting agency must have a prime mover with a compatible hitch. Fremont County OEM's prime mover does have a compatible hitch but may not be available at all times.

The trailer is available 24/7 with the restrictions mentioned above.

The combination to the trailer is held by the members of the Fremont County EMS Council.

Requesting agency is responsible for returning or replacing all equipment and supplies in the trailer.

Fremont County Medical Surge Cache

Location:

Fremont County DOT Central Shop
1170 Red Canyon Road
Canon City, CO. 81212

To Request:

Fremont County Public Health
719 276-7450 (office) 719 331-1831 (cell)

Or:

Fremont County OEM
Fremont County Emergency Manager
719 276-7422 (office) 719 240-1608 (cell)

Or Dispatch
719 792-6411

Capability:

Contains enough supplies to treat approximately 100 victims.

Responsible Agency:

Storage: Fremont County Public Health and Office of Emergency Management

Rotation: Fremont County Public Health and Office of Emergency Management

Contents

Product Name	Description	Unit	Number pieces per unit
Trailer - 20'	Tandem Cargo	EA	1
Applicator, cotton tipped	sterile, cotton-tipped, wood shaft; 5 yr shelf life	PK	2
Bag Holder	rectangular aluminum	EA	4
Bag, Ambu (adult)	Disposable	EA	2
Bag, Ambu (infant)	Disposable	EA	2
Bag, disposable	Plastic, drawstring, 33 gal.	CS	2
Bag, Disposable, Biohazard	disposable, 2 ml, red, 33 gallon	PK	1
Batteries, AA	for flashlights	PK	2
Bedpan	pontoon type, plastic	CS	2
Bedpan, Fracture	Plastic, female, mauve	EA/CS	2
Blanket, Flannel		EA	120
Blanket, infant	white, cotton	EA	72
Blanket, thermal	WHI2.2 lb 48	EA	48
Blood Pressure Unit	Aneroid, Child, L/F	EA	8
Blood Pressure Unit	Aneroid, Adult, L/F	EA	2
Brief, Adult	Trimline, Medium, 8/12's	EA/CS	1
Bungy Cords	20 piece assortment	EA	1
Chair, Folding	Poly	EA	6
Clip Boards	brown clipboard	EA	105
Cots, Portable	Collapsible deluxe aluminum military cot	EA	80
Cots, Portable 500 lb rated	600 Denier nylon pvc-back poly on aluminum frame	EA	10
Crib, Peds, Portable	single drop rail	EA	6
Diapers, disposable	Baby, Cloth-Like CVR	EA/CS	1
Disinfectants/detergent	Meritz Plus, 32 oz.	CS	1
Emesis Basin	Mauve	EA/CS	1
Gate, Child	Superyard XT Gate by Northgate Industries	EA	5
Gloves	Medium, powder free, chloroprene	PK	5
Gloves	Large, powder free, chloroprene	PK	2
Gown, Patient, disposable	Adult, tissue/poly-tissue, blue; 2 yr shelf life	CS	4
Gown, Patient, disposable	Pediatric, poly, white	CS	2
Gown, Provider	LARGE, DuPont ProVent, Open back	CS	3
Gown, Provider	MEDIUM, DuPont ProVent, Open back	CS	3

Product Name	Description	Unit	Number pieces per unit
Hamper Bag	drawcord, p/c natural	EA/DZ	1
Hamper, Linen (soiled)	Rectangular stnd w/o lid	EA	4
Hand Cleaner (waterless)	Epi-Clenz, 4 oz 70% ethyl	CS	1
HandCard		EA	?
ID Band, Insert	Adult, vinyl, Blue	EA/BX	1
ID Band, pediatric	vinyl, snap, pink	EA/BX	1
IV Set	15DR/ML, LL,NO	EA/CS	1
Light, Flashlight	VersaBrite II, 8000 cp	EA	5
Light, Headlamp	Trident halogen w/cloth strap	EA	2
Mask, N-95 particulate respirators	Resp, 8211 N95, Cool Flw	PK	40
Mask, Oxygen, Adult	Medium concent w/7'	EA/CS	1
Mask, Oxygen, Pediatric	Medium concen, 7'TB	EA/CS	1
Mat, Child	Mahar flat rest mat/2" foam (10 yr warranty)	EA	6
Mattress, Portable Crib	Kolcraft, 2.5" thick, nonallergenic	EA	6
Mattress Underpad, Crib	Polymer, Deluxe	EA/CS	1
Name Badge & Holder, plastic clip-on	inkjet/laserjet, 100/box	BX	1
Notepads	White, 100 pages	PK	2
Pack, Ice	Cold Compress	CS	2
Pack, Warm	Solar-Pack	CS	2
Penlight, disposable	6 /pk	EA/PK	2
Pens, Standard	Bic Clic Stick	DZ	3
Pillowcase, disposable	Tissue/Poly, White	EA/CS	2
Pillows, disposable	Protect a Med Cot Pillow, blue	CS	9
Pole, IV	4 caster, 2 hook	EA	40
Pump, hand, air		EA	?
Scissors, Lister bandage	5 1/2"	EA	?
Screen, Privacy, 3-panel	folding, w/casters, flame retardant	EA	2
Sharps Containers, Biohazard	2 gal. Red	EA/CS	1
Sheets, Stretcher	Tissue/Poly, Blue	CS	2
Soap, Liquid	Protection Plus Antimicrobial	CS	1
Spectacles, Eye Protective	clear, wraparound, poly	PK	2

Product Name	Description	Unit	Number pieces per unit
Stethoscope, dual head	black, 5 yr shelf life	EA	6
Storage container	clear plastic, attached top	EA	2
Stretcher, Folding	Ferno Model 12	EA	2
Stretcher, Mil Spec	Canvas	EA	?
Stretcher, w/Wheels	Ferno Model 11	EA	2
Table, Folding	Gray	EA	2
Tape, Cloth	Cloth	RL/BX	1
Tape, Duct		EA	2
Thermometer, Disposable Strips	Nextemp 1 use thermometer; 5 yr shelf life	PK	2
Tongue depressor		CS	1
Toumiquet	latex free	EA/CS	1
Urinal, male	w/Hill-Rom Compatible Hndle	EA/CS	1
Wheelchair		EA	4
Dolly			1
Handpump			1

APPENDIX H

Radio Frequencies

Non-DTR radio frequencies in use in and around Fremont County

Public Safety VHF - Names and Frequencies

Public Safety VHF								
Bank	CH No.	LABEL:	Channel Name	RX FreqMHz	RX PLH	TX FreqMHz	TX PLHz	W/N
1	1	MRA 1	Mountain Rescue 1	155.1600	CS	155.1600	103.5000	N
1	2	MRA 2	Mountain Rescue 2	155.2350	CS	155.2350	151.4000	N
1	3	CSARS 1	Colorado SAR 1	151.5125	CS	151.5125	156.7000	N
1	4	CSARS 2	Colorado SAR 2	151.7000	CS	151.7000	156.7000	N
1	5	CSARS 3	Colorado SAR 3	158.4000	CS	158.4000	156.7000	N
1	6	155.205		155.2050	CS	155.2050	127.3000	N
1	7	FC SO	Fremont Sheriff	154.8450	CS	155.7300	123.0000	N
1	8	HV FD	Howard Fire	154.1300	CS	159.1950	186.2000	N
1	10	AVR	Arkansas Valley Amb.	158.8650	CS	154.4300	156.7000	N
1	11	DMVF	Deer Mountain Fire	154.2350	CS	156.0750	141.3000	N
1	12	CUC RP	Custer County	151.0625	CS	158.8675	100.0000	N
1	13	CUC DIR	Custer County	151.0625	CS	151.0625	100.0000	N
1	14	VFIRE 21	Federal	154.2800	CS	154.2800	156.7000	N
1	15	VFIRE 22	Federal	154.2650	CS	154.2650	156.7000	N
1	16	VFIRE 23	Federal	154.2950	CS	154.2950	156.7000	N
1	17	VMED 28	Federal	155.3400	CS	155.3400	156.7000	N
1	18	VLAW 31	Federal	155.4750	CS	155.4750	156.7000	N
1	19	VCALL 10		155.7525	CS	155.7525	156.7000	N
1	20	VTAC 11		151.1375	CS	151.1375	156.7000	N
1	21	VTAC 12		154.4525	CS	154.4525	156.7000	N
1	22	VTAC 13		158.7375	CS	158.7375	156.7000	N
1	23	VTAC 14		159.4725	CS	159.4725	156.7000	N
1	24	VTAC 17R		161.8500	CS	157.2500	156.7000	N
1	25	VTAC 17D		161.8500	CS	161.8500	156.7000	N
1	26	FREMONT PW		155.95500		155.95500		
1	27	CANON CTY FD		154.31000		154.31000		
1	28	CANON CTY SV		155.76000		155.76000		
1	31	FLRNCE FD/PD		154.40000		154.40000		
1	32	TALAHSE VFD		154.37000		154.37000		
1	33	TALAHSE CMR1		154.57000		154.57000		
1	34	TLHSE CMR ST		155.28000		155.28000		

Amatuer Radio								
Bank		Channel Name	Channel Configuration	Eligible Users	RX Freq N or W	RX Tone/NA C	TX Freq N or W	Tx Tone/NA C
3	1	Canon City	Repeater	Fremont	145.490	103.500	144.890	103.500
3	2	Cripple Creek	Repeater	Fremont, Custer	145.460	67.000	144.860	67.000
3	3	Westcliffe	Repeater	Westcliffe	147.060	77.000	147.660	67.000
3	4	VHF	Simplex	D15	146.415	136.500	146.415	136.500
3	5	South Region Interop	Simplex	D-15,16,19	146.580	CSQ	146.580	CSQ
3	6	Crossband VHF	Crossband	D15	146.475	136.500	146.475	136.500

MURS/FRS/GMRS/Weather/Dot								
Bank	Location	Name	Frequency	rToneFreq	cToneFreq	DtcsCode	DtcsPolarity	Mode
4	1	MURS 1	151.820	88.5	88.5	23	NN	NFM
4	2	MURS 2	151.880	88.5	88.5	23	NN	NFM
4	3	MURS 3	151.940	88.5	88.5	23	NN	NFM
4	4	BLUE	154.570	88.5	88.5	23	NN	FM
4	5	GREEN	154.600	88.5	88.5	23	NN	FM
4	6	RED	151.625	88.5	88.5	23	NN	FM
4	7	PURPLE	151.955	88.5	88.5	23	NN	FM
4	8	NOAA1	162.400	88.5	88.5	23	NN	FM
4	9	NOAA2	162.425	88.5	88.5	23	NN	FM
4	10	NOAA3	162.450	88.5	88.5	23	NN	FM
4	11	NOAA4	162.475	88.5	88.5	23	NN	FM
4	12	NOAA5	162.500	88.5	88.5	23	NN	FM
4	13	NOAA6	162.525	88.5	88.5	23	NN	FM
4	14	NOAA7	162.550	88.5	88.5	23	NN	FM

Common Radio Frequencies							
Bank	Channel Name		RX		TX		Tone
2	1	Pike Dir	Pike Direct	168.725		168.725	123.000
2	2	Pike NF Rptr	Pike NF Repeaters	168.725		168.125	
2	3	San Isabel Dir	San Isabel Direct	169.900		169.900	131.800
2	4	San Is NF Rptr	San Is NF Repeaters	169.900		169.125	
2	5	Grassland Dir	Grassland Direct	171.500		171.500	131.800
2	6	Grasslands Rptr	Grasslands Repeaters	171.500		164.938	
2	7	BLM Rptr	BLM Repeaters	173.675		164.625	
2	8	RGF Dir	RGF Direct	164.150		164.150	123.000
2	9	RGF Rptr	RGF Repeaters	164.150		164.913	
2	10	PBC Air-Grd 35	PBC Air-Ground 35	167.225		167.225	
2	11	PBC Air-Grd 58	PBC Air-Ground 58	169.088		169.088	
2	12	PBC Air-Air 1	PBC Air-Air 1	126.025		126.025	
2	13	PBC Air-Air 2	PBC Air-Air 2	124.375		124.375	
2	14	Nat'l Flight Follow	National Flight Follow	168.650		168.650	110.900
2	15	Air Guard	Air Guard	168.625		168.625	110.900

Forest / BLM Repeaters			
Bank		Channel Name	Tone—TX only
2	16	Pike - Sacramento	103.500
2	17	Pike - Badger Mtn.	136.500
2	18	Pike - Devils Head	156.700
2	19	Pike - Critchell	131.800
2	20	SI – Beulah	103.500
2	21	SI - Methodist	123.000
2	22	SI – South Peak	136.500
2	23	SI – St. Charles	156.700
2	24	SI – Princeton	192.800
2	25	NGL – Picketwire	110.900
2	26	NGL – Springfield	146.200
2	27	NGL – Campo	167.900
2	28	BLM – Methodist	156.700
2	29	RGF – Boot	110.900
2	30	RGF – Bristol	136.500
2	31	RGF – San Antonio	156.700
2	32	Pike - Front Range	110.900
2	33	Pike - N. Twin Cone	146.200
2	34	Pike - Pikes Peak	167.900
2	35	SI – Zion	103.500
2	36	SI – Quail	110.900
2	37	SI – Twin Mtn.	131.800
2	38	SI – Basam	146.200
2	39	SI – Apishapa	167.900
2	40	NGL – Tater Butte	103.500
2	41	NGL – La Junta	136.500
2	42	NGL – Elkhart	156.700
2	43	BLM – Pisgah	141.300
2	44	BLM – Twin	156.700
2	45	RGF – Methodist	131.800
2	46	RGF – Grey Back	146.200
2	47	RGF - Zapata	167.900

Fire					
Bank	CH No.	LABEL:	Description	Frequency	Tone
2	48	GOVT WORK	Government Work	168.35000	
2	49	BLM DIRECT	BLM Direct	168.42500	156.7 PL
2	50	PIKE DIRECT	Pike Forrest Direct	168.72500	123.0 PL
2	51	SAN IS DIRCT	San Isabel Direct	169.90000	131.8 PL
2	52	AIR->GND 1	Air - Ground 1	172.47500	

APPENDIX I

Dispatch Resource Request Tracking Form (SAMPLE)

To be provided by requestor	
<i>Tracking Number (Date/Time)</i>	7-21-1334 (July 21 at 1:34)
<i>Item requested:</i>	Bull dozer
<i>Size/type</i>	12 foot blade
<i>Who ordered resource?</i>	John Doe, 5-S-91 Incident Commander (IC)
<i>Agency?</i>	Tallahassee Fire
<i>Contact information?</i>	372-0000c, 372-0001 station, Mac 12 on DTR
<i>When is it needed?</i>	1800 on July 21
<i>Where is it going?</i>	Tallahassee Fire Station 123 Highway 9 (or mile marker 2) Canon City
To be given to resource provider	
<i>Point of Contact at scene:</i>	Does not necessarily need to be filled in John Doe (IC)
<i>Contact Information</i>	MAC 10 on DTR 372-0000 cell, 372-0001 Station Phone
<i>Location of delivery point:</i>	Tallahassee Fire Station, 123 Highway 9, Canon City
<i>Requested delivery time/date</i>	1800 on July 21
<i>Other:</i>	Road closed north of station must deliver from South at junction of Highways 9 and 50. Icy roads
Completed by Dispatch	
<i>Resource Provider:</i>	Pueblo County DOT
<i>Resource Provider contact:</i>	James Doe 719 583-1111
<i>Order request completed by:</i>	Jane Doe
<i>Time and date:</i>	1345, July 21

Dispatch Resource Request Tracking Form

To be provided by requestor	
<i>Tracking Number (Date/Time)</i>	
<i>Item requested:</i>	
<i>Size/type</i>	
<i>Who ordered resource?</i>	
<i>Agency?</i>	
<i>Contact information?</i>	
<i>When is it needed</i>	
<i>Where is it going?</i>	
To be given to resource provider	
<i>Point of Contact at scene:</i>	Does not necessarily need to be filled in
<i>Contact Information</i>	
<i>Location of delivery point:</i>	
<i>Requested delivery time/date</i>	
<i>Other:</i>	
Completed by Dispatch	
<i>Resource Provider:</i>	
<i>Resource Provider contact:</i>	
<i>Order request completed by:</i>	
<i>Time and date:</i>	

Appendix J

ALL-HAZARD INCIDENT COMPLEXITY ANALYSIS			
Incident Name:		Date:	
Incident Number:		Time:	
This Complexity Analysis is weight based on the relevance to Life Safety, Incident Stabilization and Property Conservation			WASHINGTON FIRE SERVICES RESOURCE MOBILIZATION PLAN
Complexity Factors			Check if Pertinent
Impacts to life, property and the economy			
Urban interface; structures, developments, recreational facilities or potential for evacuation.			<input type="checkbox"/> 3%
Community and Responder Safety			<input type="checkbox"/> 5%
Performance of public safety resources affected by cumulative fatigue.			<input type="checkbox"/> 5%
Overhead overextended mentally and/or physically.			<input type="checkbox"/> 5%
Communication ineffective with tactical resources or dispatch.			<input type="checkbox"/> 5%
Incident action plans, briefings, etc. missing or poorly prepared.			<input type="checkbox"/> 5%
Resources unfamiliar with local conditions and tactics.			<input type="checkbox"/> 5%
Potential Hazardous Materials			
Potential of Hazardous Materials			<input type="checkbox"/> 4%
Weather and other environmental influences			
Unique natural resources, special-designated areas, critical municipal watershed, protected species habitat, cultural value sites.			<input type="checkbox"/> 3%
Likelihood of cascading events			
Variety of specialized operations, support personnel or equipment.			<input type="checkbox"/> 4%
Potential crime scene (including terrorism)			
Potential crime scene.			<input type="checkbox"/> 4%
Potential of terrorism.			<input type="checkbox"/> 5%
Politically sensitivity, external influences, and media relations			
Sensitive political concerns, media involvement or controversial policy issues.			<input type="checkbox"/> 3%
Organizational Performance Values and Product Development			
Non-IAP products not being developed or deficient.			<input type="checkbox"/> 3%
Area involved, jurisdictional boundaries			
Incident threatening/affecting more than one jurisdiction and potential for unified command with different conflicting management objectives.			<input type="checkbox"/> 3%
Availability of Resources			
Operations are at the limit of span of control.			<input type="checkbox"/> 4%
Unable to properly staff air operations.			<input type="checkbox"/> 4%
Limited local resources available for initial attack/response.			<input type="checkbox"/> 4%
Heavy commitment of local resources to logistical support.			<input type="checkbox"/> 4%
Existing forces worked 12 hours without success.			<input type="checkbox"/> 4%
Percentage Score			
If 10% or lower, look at going to or staying at Type 4 Team			
If 10% to 20%, maintain or go to Type 3 Team			
If greater than 20%, consider Type 2 or additional/specialized overhead			

Completed by:

Name:

Date:

